

SPECIFICATIONS		
PLATFORM SIZE	36"x48" [914mm x 1219mm]	
FOOTPRINT	51"x48" [1295mm x 1219mm]	
MAX LOAD	750lb [340kg]	
SPEED	8fpm [0.04mps]	
DRIVE TYPE	SCREW NUT SYNCHRONOUS BELT DRIVE	
MOTOR SPEC	1/2 HP [0.37kW]	
POWER SUPPLY	110V / 1PH / 60Hz	
SAFETY PLATE BENEATH PLATFORM		
NON-LOAD-BEARING BACKUP SAFETY NUT		
LIFTING RANGE [LR]	TOWER HEIGHT [TH]	
	SHORT COVER	TALL COVER
	52" [1321]	74 1/2" [1892]
		85 1/2" [2172]

☐ Accepted as Shown

☐ Revise and Resubmit

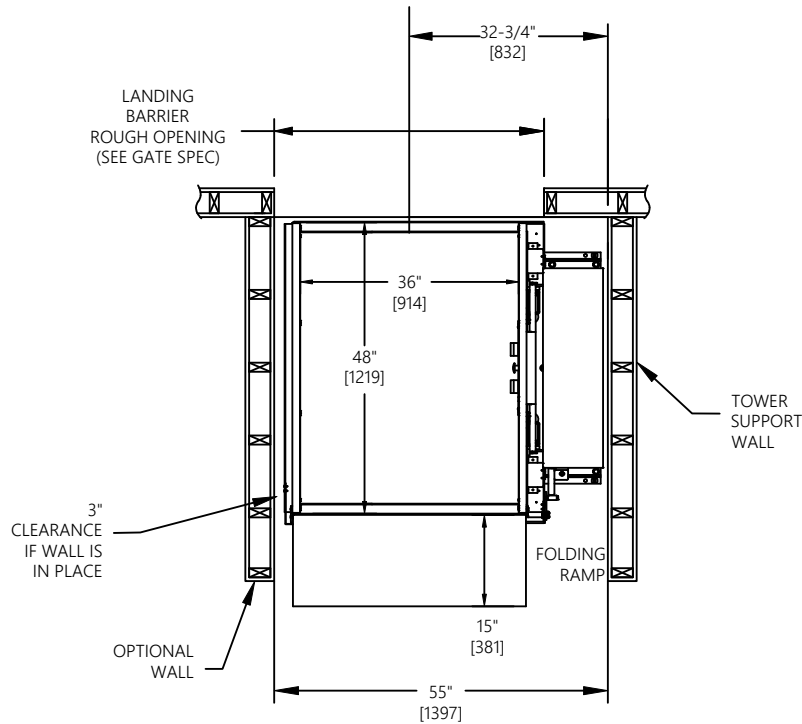
☐ Accepted as Modified

Date: \_\_\_\_\_

Per: \_\_\_\_\_

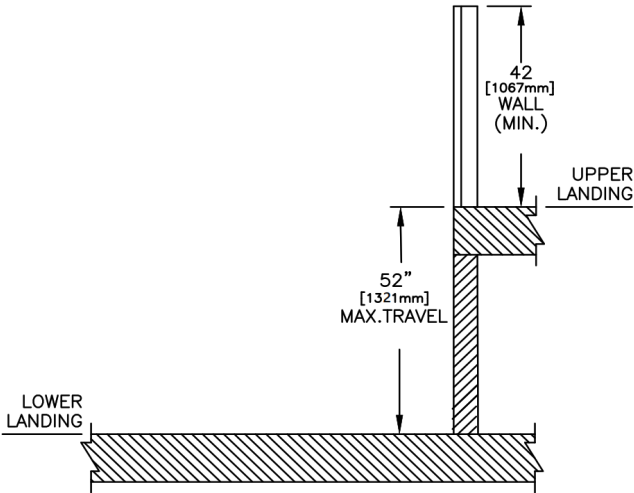
JOB No.	TOTAL TRAVEL	52 1321	INCHES mm	No. OF LANDINGS 2		Model	APEVPLR52STRLAR	
DESCRIPTION					52 RESIDENTIAL VPL - FREEDOM JOURNEY LIFT-STRAIGHT THRU- RIGHT ACCESS			
ARCHITECT							INSTALLATION DETAILS  AND SPECIFICATIONS	
GENERAL CONTRACTOR					SCALE: N.T.S.			

PLAN VIEW



- ☐ Accepted as Shown
- ☐ Revise and Resubmit
- ☐ Accepted as Modified

Date: \_\_\_\_\_  
Per: \_\_\_\_\_



LANDING BARRIER TYPE	ROUGH OPENING WIDTH	ROUGH OPENING HEIGHT
36x42 STEEL GATE	44½" [1130]	N/A
36x42 ALUM & GLASS GATE	44½" [1130]	N/A

JOB No.	TOTAL TRAVEL	52 1321	INCHES mm	No. OF LANDINGS 2		Model	APEVPLR52STRLAR
DESCRIPTION	52 RESIDENTIAL VPL - FREEDOM JOURNEY LIFT-STRAIGHT THRU- RIGHT ACCESS					INSTALLATION DETAILS AND SPECIFICATIONS	
ARCHITECT							
GENERAL CONTRACTOR						DRAWING No. 1/2 3648-S-R	REV 00