

## SPECIFICATIONS

PLATFORM SIZE	36"x48" [914mm x 1219mm]
FOOTPRINT	51"x48" [1295mm x 1219mm]
MAX LOAD	750lb [340kg]
SPEED	8fpm [0.04mps]
DRIVE TYPE	SCREW NUT SYNCHRONOUS BELT DRIVE
MOTOR SPEC	1/2 HP [0.37kW]
POWER SUPPLY	110V / 1PH / 60Hz

SAFETY PLATE BENEATH PLATFORM

NON-LOAD-BEARING BACKUP SAFETY NUT

LIFTING RANGE [LR]	TOWER HEIGHT [TH]	
	SHORT COVER	TALL COVER
52" [1321]	74 1/2" [1892]	85 1/2" [2172]

☐ Accepted as Shown

☐ Revise and Resubmit

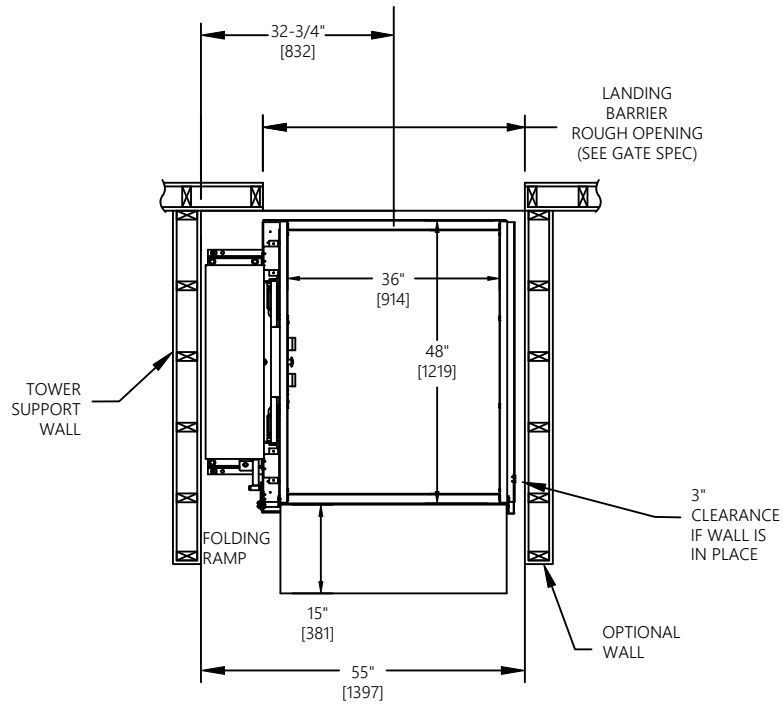
☐ Accepted as Modified

Date: \_\_\_\_\_

Per: \_\_\_\_\_

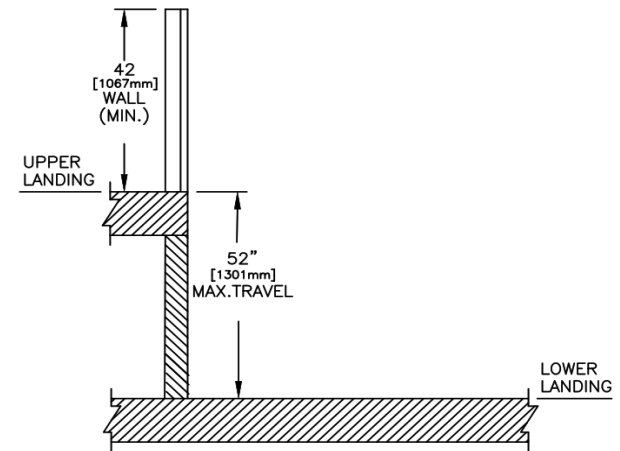
JOB No.	TOTAL TRAVEL	52 INCHES 1321 mm	No. OF LANDINGS 2		Model	APEVPLR52STRAL	
DESCRIPTION				52 RESIDENTIAL VPL - FREEDOM JOURNEY LIFT-STRAIGHT THRU- LEFT ACCESS			
ARCHITECT							
GENERAL CONTRACTOR				SCALE: N.T.S.		DRAWING No. 1/2 3648-S-L	
						REV 00	

# PLAN VIEW



# VARIABLE DIMENSIONS

☐ Accepted as Shown  
☐ Revise and Resubmit  
☐ Accepted as Modified  
 Date: \_\_\_\_\_  
 Per: \_\_\_\_\_



LANDING BARRIER TYPE	ROUGH OPENING WIDTH	ROUGH OPENING HEIGHT
36x42 STEEL GATE	44½" [1130]	N/A
36x42 ALUM & GLASS GATE	44½" [1130]	N/A

JOB No.	TOTAL TRAVEL 52 1321	INCHES mm	No. OF LANDINGS 2		Model	APEVPLR52STRLAL
DESCRIPTION 52 RESIDENTIAL VPL - FREEDOM JOURNEY LIFT-STRAIGHT THRU- LEFT ACCESS					INSTALLATION DETAILS AND SPECIFICATIONS	
ARCHITECT						
GENERAL CONTRACTOR				SCALE: N.T.S.	DRAWING No. 1/2 3648-S-L	REV 00