

SPECIFICATIONS	
PLATFORM SIZE	36"x48" [914mm x 1219mm]
FOOTPRINT	51"x48" [1295mm x 1219mm]
MAX LOAD	750lb [340kg]
SPEED	8fpm [0.04mps]
DRIVE TYPE	SCREW NUT SYNCHRONOUS BELT DRIVE
MOTOR SPEC	1/2 HP [0.37kW]
POWER SUPPLY	110V / 1PH / 60Hz
SAFETY PLATE BENEATH PLATFORM	
NON-LOAD-BEARING BACKUP SAFETY NUT	

LIFTING RANGE [LR]	TOWER HEIGHT [TH]	
	SHORT COVER	TALL COVER
28" [711]	50½" [1283]	61½" [1562]

☐ Accepted as Shown

☐ Revise and Resubmit

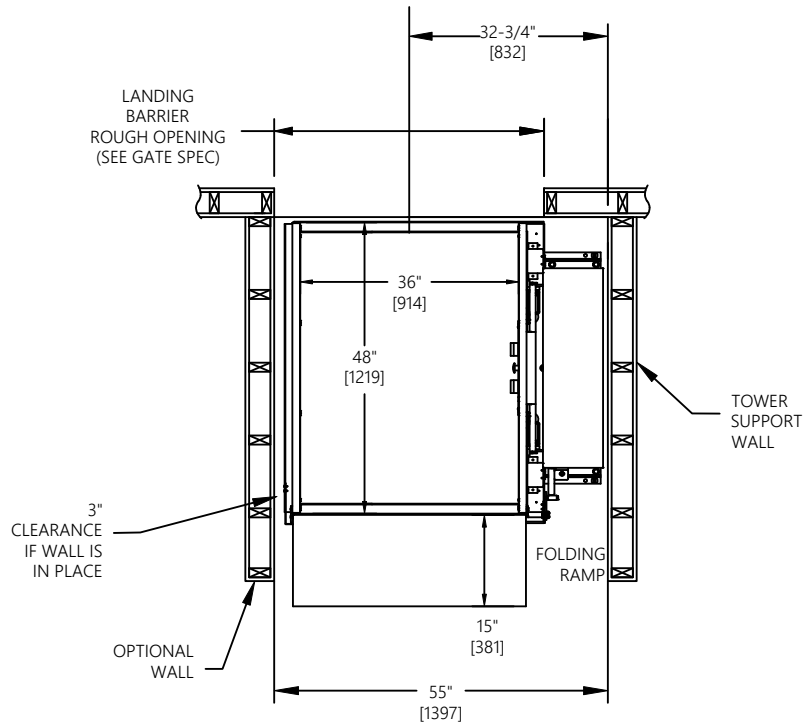
☐ Accepted as Modified

Date: _____

Per: _____

JOB No.	TOTAL TRAVEL	28 711	INCHES mm	No. OF LANDINGS 2		Model	APEVPLR28STRLAR	
DESCRIPTION					28 RESIDENTIAL VPL - FREEDOM JOURNEY LIFT-STRAIGHT THRU- RIGHT ACCESS		INSTALLATION DETAILS AND SPECIFICATIONS	
ARCHITECT								
GENERAL CONTRACTOR					SCALE: N.T.S.	DRAWING No. 1/2 3648-S-R		REV 00

PLAN VIEW



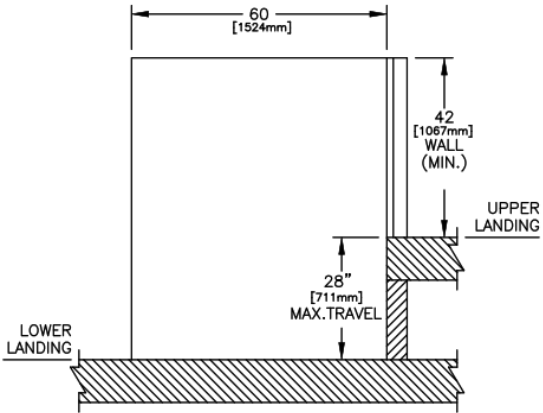
☐ Accepted as Shown

☐ Revise and Resubmit

☐ Accepted as Modified

Date: _____

Per: _____



LANDING BARRIER TYPE	ROUGH OPENING WIDTH	ROUGH OPENING HEIGHT
36x42 STEEL GATE	44½" [1130]	N/A
36x42 ALUM & GLASS GATE	44½" [1130]	N/A

JOB No.	TOTAL TRAVEL	28 711	INCHES mm	No. OF LANDINGS 2		Model	APEVPLR28STRLAR
DESCRIPTION	28 RESIDENTIAL VPL - FREEDOM JOURNEY LIFT-STRAIGHT THRU- RIGHT ACCESS					INSTALLATION DETAILS AND SPECIFICATIONS	
ARCHITECT							
GENERAL CONTRACTOR						DRAWING No. 1/2 3648-S-R	REV 00