

INDOOR/OUTDOOR VERTICAL PLATFORM LIFT (VPL)

# JOURNEY LIFT

Affordable Access



## RESIDENTIAL

[FreedomLiftSystems.com](http://FreedomLiftSystems.com)  
1-877-947-7769  
[apsupport@accessibilitypro.com](mailto:apsupport@accessibilitypro.com)

**FREEDOM**  
LIFT SYSTEMS

BY ACCESSIBILITY PROFESSIONALS

# FLEXIBLE DEPENDABILITY

**With its compact flexible design and simple installation, the Journey Lift's legacy of affordable mobility spans over 35 years.**

The Journey Lift's modular and configurable design allows for quick adaptation to meet your specific site requirements. Whether you need to navigate unique architectural features or accommodate various accessibility needs, the Journey Lift can be tailored to fit seamlessly into your space.

Engineered for both indoor and outdoor spaces, the Journey Lift is an intuitive wheelchair lift for vertical rises up to 14ft. Oversized Soft Touch Controls offer riders total independence, even with limited dexterity. The Journey Lift features a durable, non-slip metal platform with high 42" walls for year-round safety. Its proprietary drive system ensures quiet, reliable, and weather-resistant operation, even in extreme conditions. Designed for comfortable travel between floors or access to garages and decks, the Journey Lift breaks down barriers to enhance your living experience.

36" x 48" Straight Through



36" x 54" Straight Through



36" x 60" Straight Through



42" x 48" 90 Degree



42" x 54" 90 Degree



42" x 60" 90 Degree



# THE HIGHLIGHTS

## IDEAL FOR:



Private  
Residence



Indoor  
Use



Outdoor  
Use



Wheelchairs

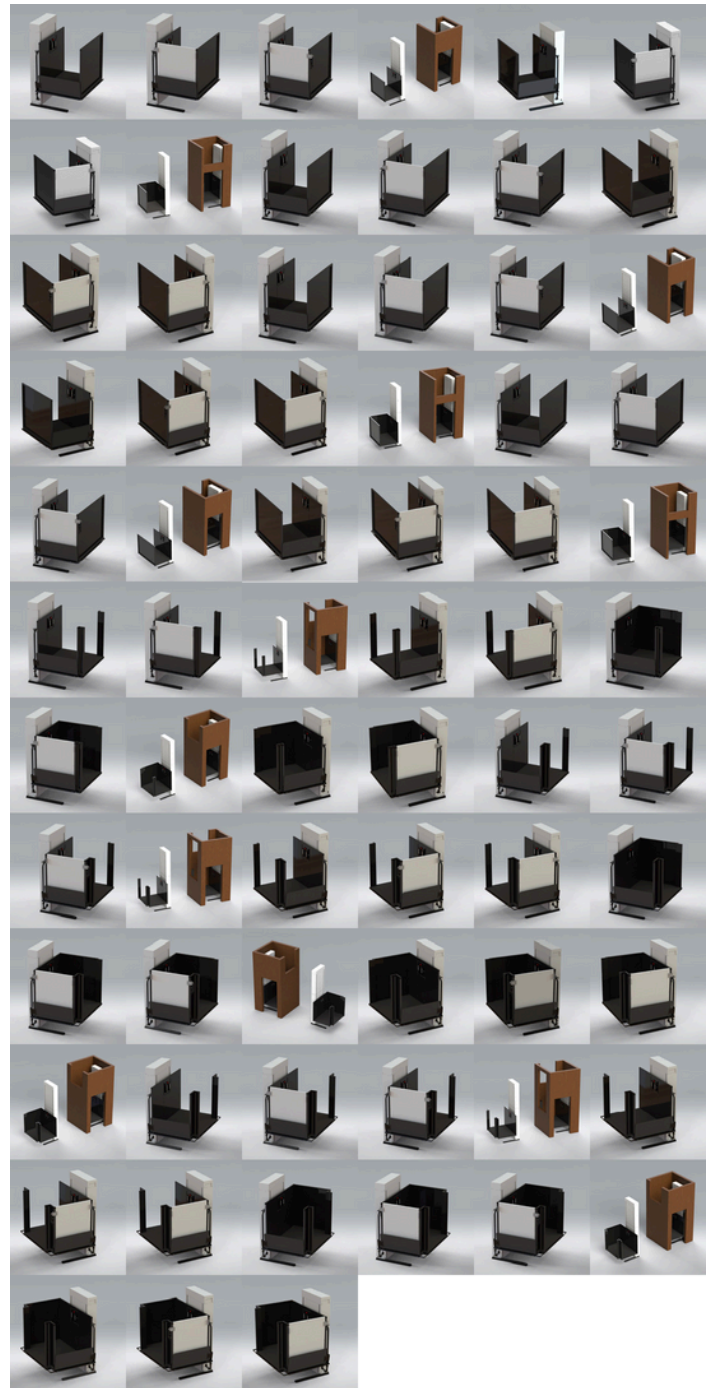
LIFTING CAPACITY:  
750 LBS

TRAVEL SPEED:  
8 FT/MIN

TRAVEL DISTANCE:  
UP TO 52"

ENTRANCE/EXIT POINTS:  
straight through, 90  
degree access

MAX PLATFORM SIZE:  
W42" x L60"  
(18 square feet)



FreedomLiftSystems.com  
1-877-947-7769  
apsupport@accessibilitypro.com

  
**FREEDOM**  
LIFT SYSTEMS  
BY ACCESSIBILITY PROFESSIONALS

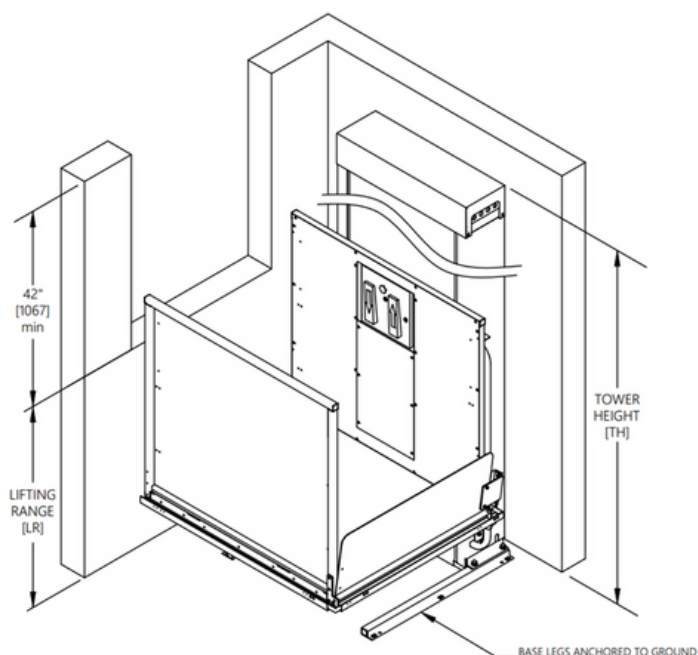
## Sizing

	Platform Size	Total Footprint (with
<b>Straight Through Access</b>	W36" x L48" W36" x L54" W36" x L60"	W52.5" x L48" W52.5" x L54" W52.5" x L60"
<b>90 Degree Access</b>	W42" x L48" W42" x L54" W42" x L60"	W56" x L48" W56" x L54" W56" x L60"

\* Excluding toe plate

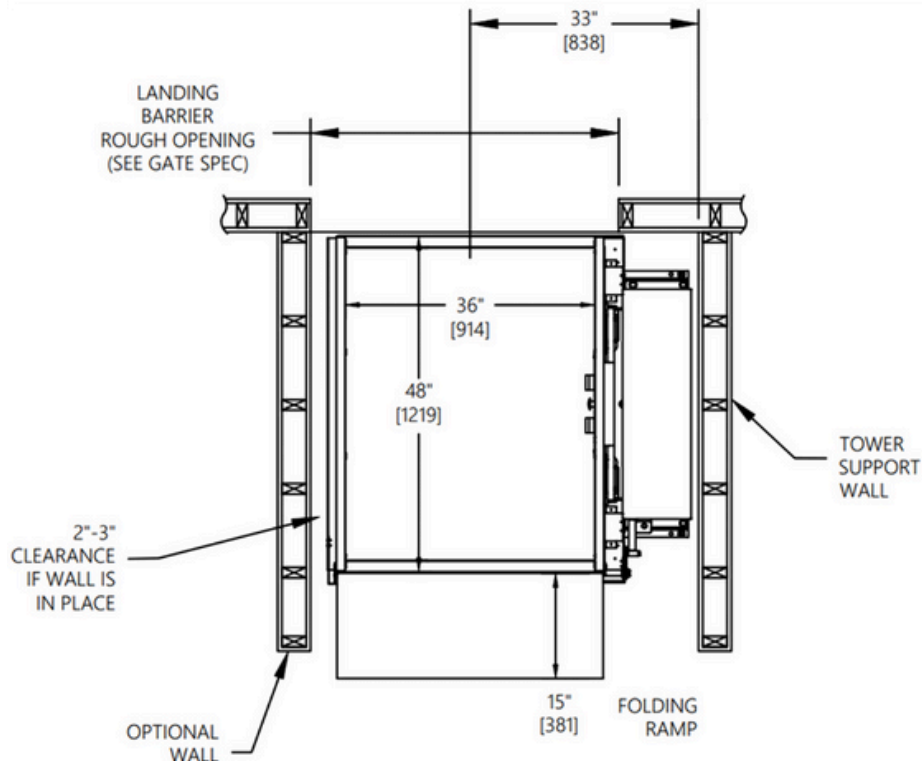
Tower Heights		Weight of Lift
Max Lifting Height (LR)	Tower Height (TH)	(Platform load not included) 510 lb
28"	50.5"	560 lb
52"	74.5"	600 lb

\* Exact weight may vary depending on selected options

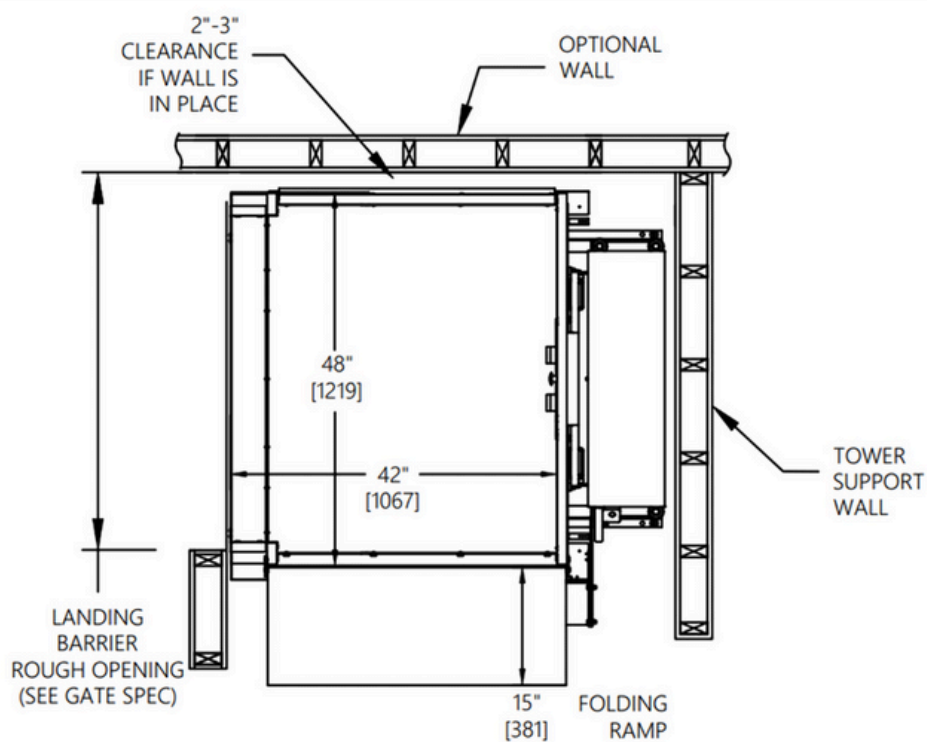




## 36"x48" Straight Through (Base Configuration)



## 42"x48" 90 Degree (Base Configuration)

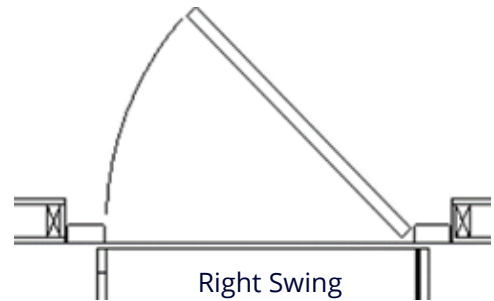
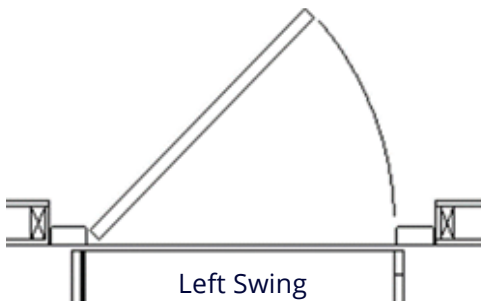


# LANDING BARRIERS

With its compact flexible design and simple installation, the Journey Lift's legacy of affordable mobility spans over 35 years.

Option for landing barriers are as follows :

- Steel Gate (shown)
- Customer Supplied Barriers  
(supply interlock only)
- Automatic Gate Operators



# KEY FEATURES

## Zero-Load Start Design

Freedom Lift's patented zero-load-start design allows the motor to reach full speed before lifting the load. This unique feature allows for full functionality during extreme weather and extends the life of all power & drive components.

## Soft Touch Paddle

The patented Freedom Lifts Soft Touch Paddle controls are oversized and responsive, allowing users to get moving with ease.

## Easy to Install

The Journey Lift comes with easy to maneuver components that can be assembled quickly with minimum site preparation.

## All-Electric Drive System

Freedom Lift's field-proven electric drive system is reliable, powerful and whisper-quiet. Plus, no hydraulic fluid = no harsh smells.





## Installation Considerations

Important things to consider for the installation location:

- Provide 15amp, 110V dedicated circuit no more than 8 feet away
- Secure tower to wall for all lifts with travel greater than 52in
- For exterior installations a secure footing – typically a concrete pad 5ft x 5ft

## Superior Reliability

Two tiers of emergency auxiliary power are available for every Freedom Lift product:

1. Emergency manual crank (Standard)
2. Full battery 40-cycle backup that will run the motor with full load for 40 cycles during a power outage (Optional)

## Code Relevance

Designed to meet ASME A18.1 and CSA B355 safety standards when properly equipped.

While Freedom Lift VPLs meet national standards, it is imperative to check State/Provincial and Local code requirements before ordering to ensure compliance. All State/ Provincial and Local compliance is the responsibility of the purchaser. Some states may require fees for site preparation and permits.

