

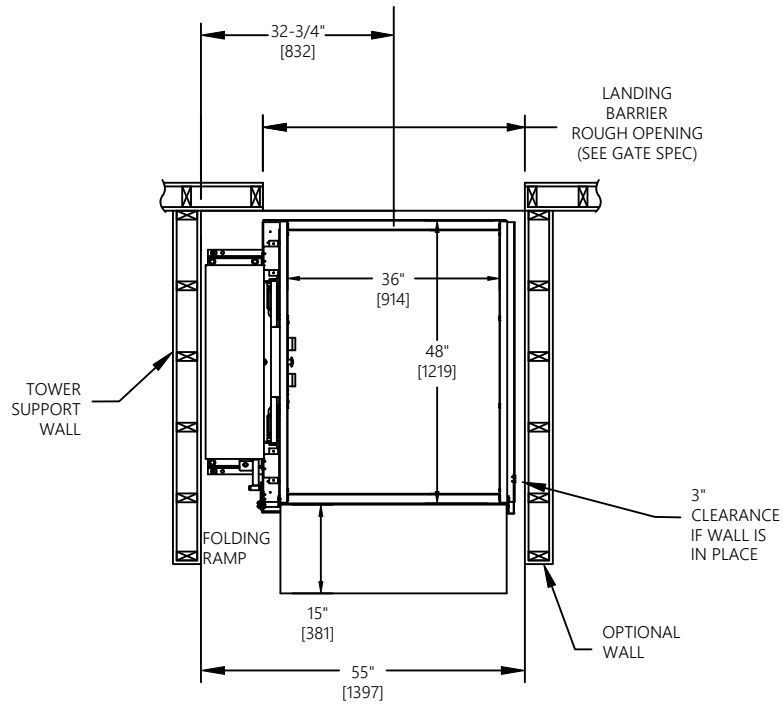
SPECIFICATIONS

PLATFORM SIZE	36"x48" [914mm x 1219mm]	
FOOTPRINT	51"x48" [1295mm x 1219mm]	
MAX LOAD	750lb [340kg]	
SPEED	8fpm [0.04mps]	
DRIVE TYPE	SCREW NUT SYNCHRONOUS BELT DRIVE	
MOTOR SPEC	1/2 HP [0.37kW]	
POWER SUPPLY	110V / 1PH / 60Hz	
SAFETY PLATE BENEATH PLATFORM		
NON-LOAD-BEARING BACKUP SAFETY NUT		
LIFTING RANGE [LR]	TOWER HEIGHT [TH]	
	SHORT COVER	TALL COVER
	28" [711]	50½" [1283]
		60½" [1562]

☐ Accepted as Shown
☐ Revise and Resubmit
☐ Accepted as Modified
Date: _____
Per: _____

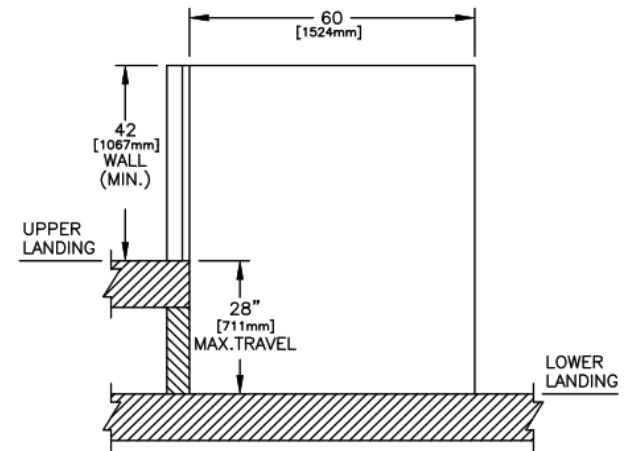
JOB No.	TOTAL TRAVEL	28 711	INCHES mm	No. OF LANDINGS 2		Model	APEVPLR28STRLAL	
DESCRIPTION					28 RESIDENTIAL VPL - FREEDOM JOURNEY LIFT-STRAIGHT THRU- LEFT ACCESS		INSTALLATION DETAILS AND SPECIFICATIONS	
ARCHITECT								
GENERAL CONTRACTOR					SCALE: N.T.S.	DRAWING No. 1/2 3648-S-L		REV 00

PLAN VIEW



TRAVEL DIMENSIONS

☐ Accepted as Shown
☐ Revise and Resubmit
☐ Accepted as Modified
 Date: _____
 Per: _____



LANDING BARRIER TYPE	ROUGH OPENING WIDTH	ROUGH OPENING HEIGHT
36x42 STEEL GATE	44½" [1130]	N/A
36x42 ALUM & GLASS GATE	44½" [1130]	N/A

JOB No.	TOTAL TRAVEL 28 711	INCHES mm	No. OF LANDINGS 2		Model	APEVPLR28STRLAL
DESCRIPTION 28 RESIDENTIAL VPL - FREEDOM JOURNEY LIFT-STRAIGHT THRU- LEFT ACCESS					INSTALLATION DETAILS AND SPECIFICATIONS	
ARCHITECT						
GENERAL CONTRACTOR				SCALE: N.T.S.	DRAWING No. 1/2 3648-S-L	REV 00