



**BY ACCESSIBILITY PROFESSIONALS**

# **FREEDOM JOURNEY LIFTS**

## **EMERGENCY OPERATION DEVICES - MANUAL #3**



**Customer Support:** 1.877.947.7769  
**Email:** [apsupport@accessibilitypro.com](mailto:apsupport@accessibilitypro.com)

Contents

**Section 1: Introduction**.....1

**Section 2: Safety Information** .....1

2.1: Symbols and Definitions ..... 2

2.2: Additional Symbols .....2

2.3: Safety Notes ..... 2

**Section 3: 90 Degree Manual Crank**.....3

**Section 4: Tower of Power** ..... 5

### Section 1: Introduction

This supplemental manual has been provided to walk you through the safe and efficient installation of the optional Tower of Power and 90 Degree Manual Crank. Please read this manual, as well as the main installation manual, thoroughly before installing and operating your lift. We recommend your lift and any add-ons be installed and serviced by a qualified technician.

### Section 2: Safety Information

#### 2.1: Symbols and Definitions

The following notations will be used through this manual to indicate areas that may present special risks or consideration.

#### **DANGER**

Danger messages indicate an imminently hazardous situation, which, if not avoided, could result in serious injury or even death.

#### **Caution!**



Caution messages indicate a potentially hazardous situation which, if not avoided, could result in serious injury, death, or damage to equipment.

#### **Note**

Note messages provide information, such as reminders, general information or additional guidelines that may provide guidance to the installer.

#### 2.2: Additional Symbols

The following are additional symbols and conventions used through the manual:

	<p><b>Detail callout</b>, used to call attention to a detailed mentioned in the body of the instructions.</p>		<p><b>Step Callout</b>, labels which step the given diagram relates to</p>
---	---	---	--

### 2.3: Safety Notes

#### Caution!

Read all instructions thoroughly before installation or use of this lift. Failure to following the instructions in this manual and the associated manuals for testing and operation could result in serious injury or death. In addition, it will render Freedom Lift Systems' warranty null and void.

Do not override any of the safety devices provided with the lift. Doing so will likely lead to serious injury or even death.

Ensure there is a minimum of 2in (50mm) and a maximum of 3in (75mm) clearance between any part or edge of the carriage that could possibly be used as a supporting handhold and any part of the fixed installation to prevent the trapping of a hand during the travel of the carriage. See Freedom installation drawings for details.

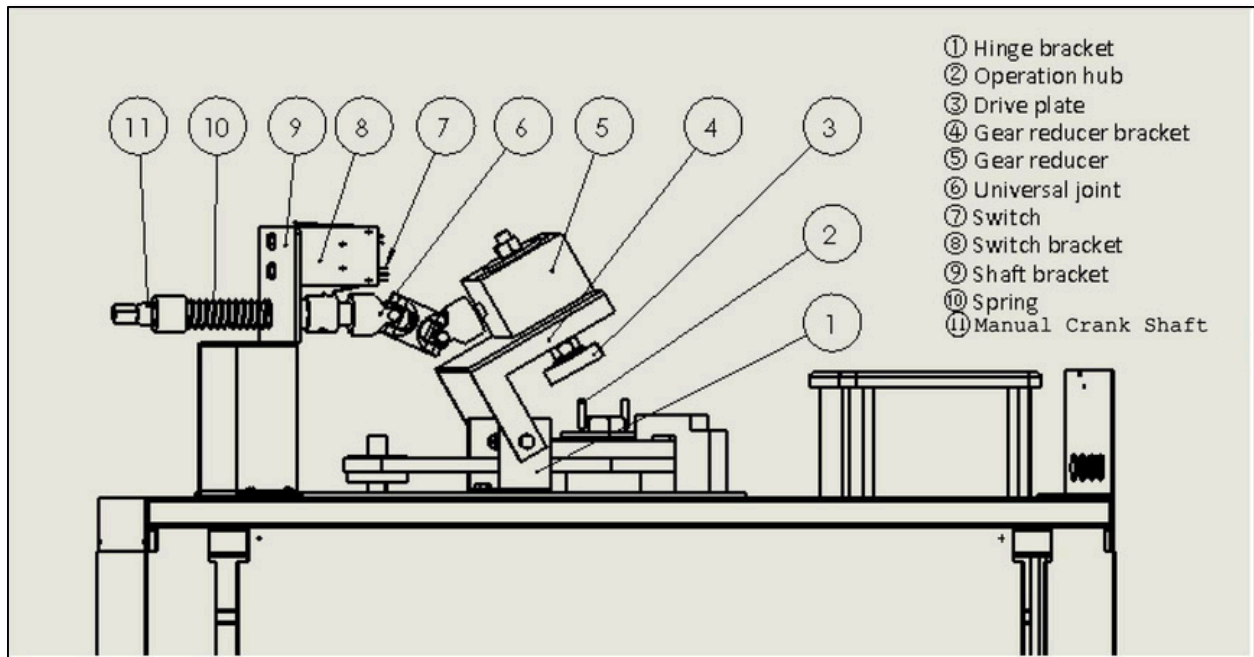
The lift is intended for use by people and not to be used for cargo or other purposes. Lifting capacity is up to a maximum of 750 lb. unless otherwise noted on the lift and in Freedom Lift Systems' supplied documentation. **(DO NOT OVERLOAD THE LIFT)**. Overloading the lift will render Freedom Lift Systems' warranty null and void. Ensure that there is nothing obstructing the carriage travel before operating the lift. Freedom Lift Systems' disclaims any and all liability for any personal injury or property damage resulting from the operation of a product that has been modified from the original design. No person or company is authorized to change the design of the product without written authorization by Freedom Lift Systems'.

Failure to observe and complete the required maintenance for your lift product will render the warranty null and void and may present significant risk that could lead to injury or death.

This list of warnings may not be exhaustive, due care around equipment should be observed

## Section 3: 90 Degree Manual Crank

90 degree manual cranking device that allow the lift to be cranked from the side without removing the top cover.



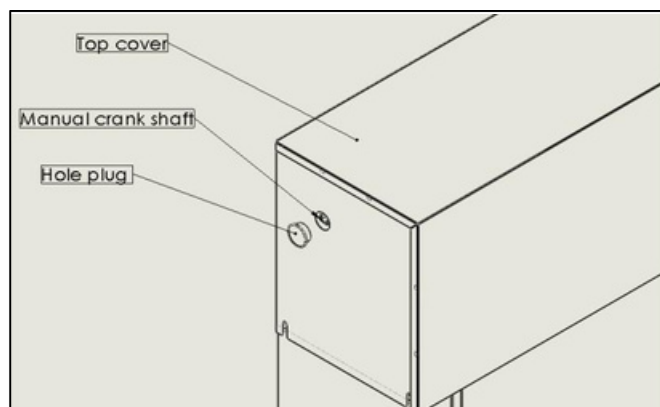
The above figure shows the normal position of the 90 Degree Manual Crank, disengaged. While the figure only shows the manual crank access on the left, the side the crank is on is specified at the time of order.

### Caution!

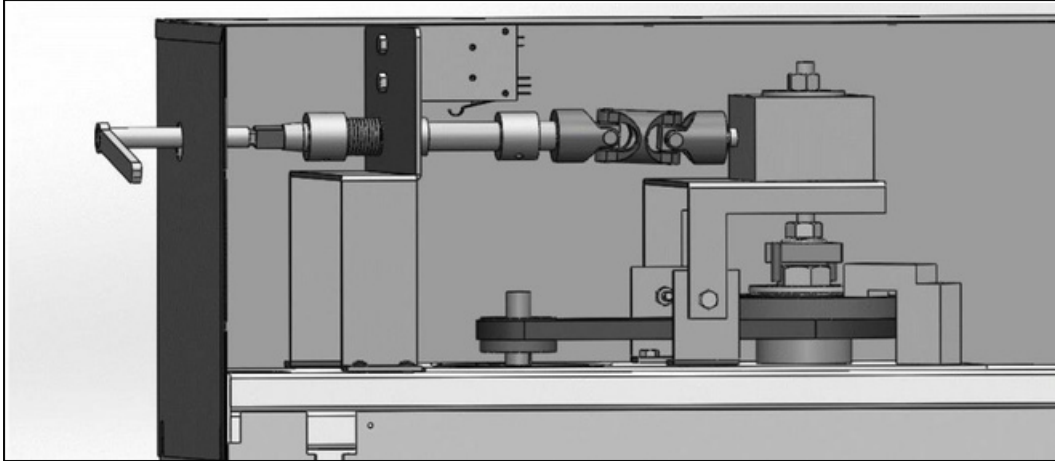
Before running or maintaining the manual crank, always unplug the power cord to disconnect its power supply.

### Operation Instructions

- 1) Remove the plug on the top cover that covers the manual crank shaft.
- 2) Insert the 3/8" ratchet and extension into the manual crank shaft and engage it with the receptacle at the end of the main drive shaft, as shown in the figure on the next page.



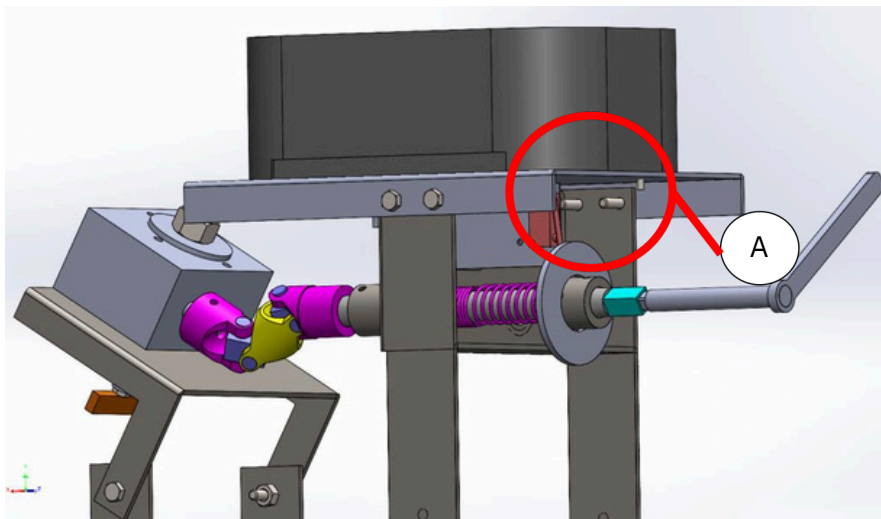
- 3) Push and hold the ratchet and extension into the manual crank's engaged position, as shown in the below figure, and rotate the shaft clockwise to lower the lift, and counter-clockwise to raise the lift.



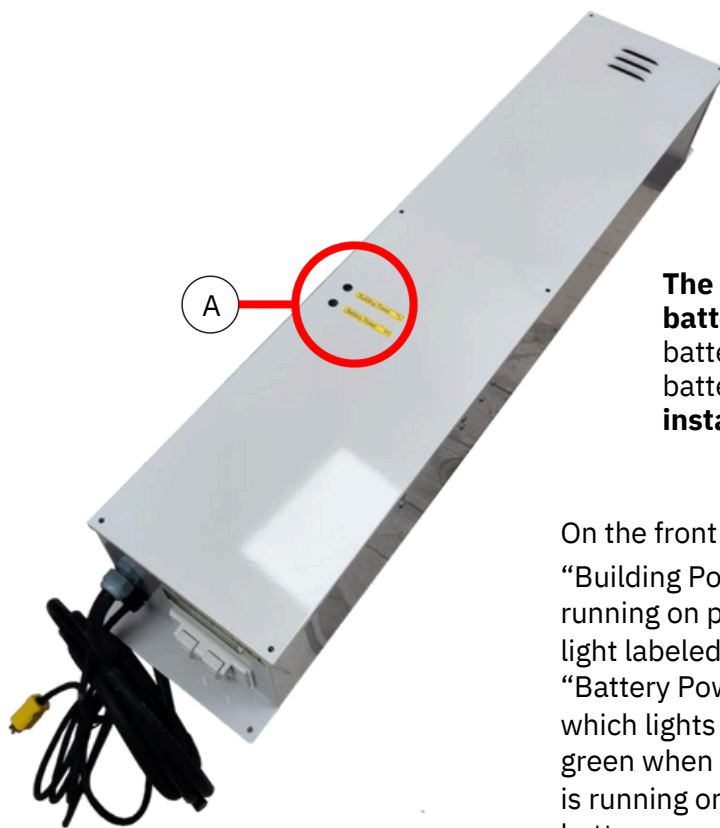
- 4) After the lift platform has reached the desired landing, rotate the shaft in the opposite direction approximately 5 times to relieve the load on the gearbox, and then retrieve the socket ratchet and extension to disengage the crank.

### Note

A “manual crank switch activation plate” (A) is used to trigger the switch when the manual crank is engaged.



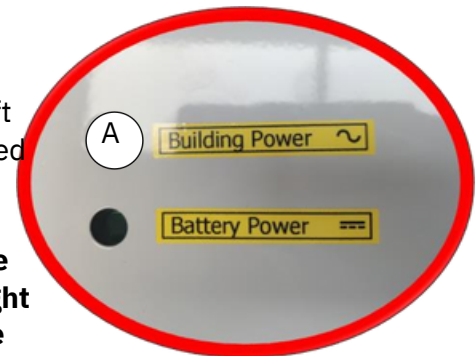
## Section 4: Tower of Power



The Optional Tower of Power serves as a battery backup for the lift, supplying power to the unit when building power has been cut off or irregular.

**The Tower of Power does not come with batteries.** The tower uses 12V U1 Gel Cell batteries, two for a standard unit and, all batteries **must be supplied by the installer.**

On the front of the tower there are two lights, one labeled “Building Power” which lights up red when the lift is running on power supplied by the building, and a second light labeled “Battery Power” which lights up green when the lift is running on stored battery power. When the lift is using the TOP, **the battery power light should always be on**, as the standard operating mode is to run on battery power. If the building power light is on, check that the batteries and inverter are functioning.



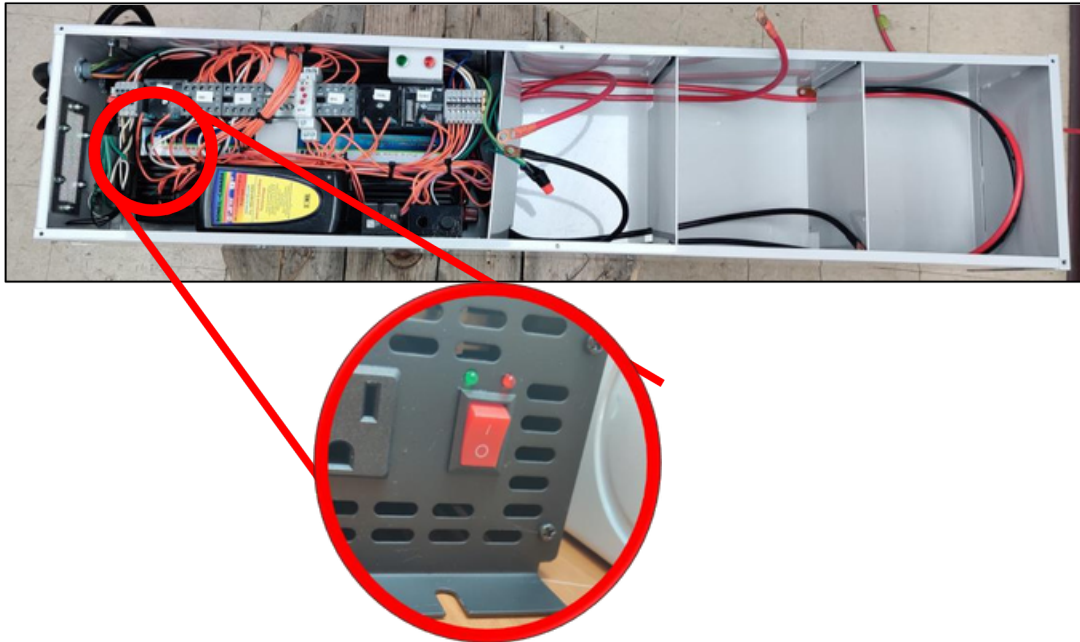
### Installation

- 1) Mount the tower of power in a location where it will not be exposed to extreme cold or hot temperatures as this will lower the performance of the top
- 2) Remove the front cover. There will be two cables for each battery. For each battery, connect the red cable to the positive (+) battery terminal, and the black cable to the negative (-) battery terminal. Once hooked up, rest the batteries on the shelves inside the tower.
- 3) Plug the lift into the receptacle located on the bottom of the top enclosure



4) Plug the TOP into the building supply power

5) Turn on the inverter switch located on the bottom side of inverter.



6) Wait 105 seconds, and battery power light should come on. Once you confirm that the tower is operating correctly, reinstall the front cover.

