

SPECIFICATIONS

PLATFORM SIZE	42"x48" [1067mm x 1219mm]
FOOTPRINT	57"x48" [1448mm x 1219mm]
MAX LOAD	750lb [340kg]
SPEED	8fpm [0.04mps]
DRIVE TYPE	SCREW NUT SYNCHRONOUS BELT DRIVE
MOTOR SPEC	1/2 HP [0.37kW]
POWER SUPPLY	110V / 1PH / 60Hz

SAFETY PLATE BENEATH PLATFORM

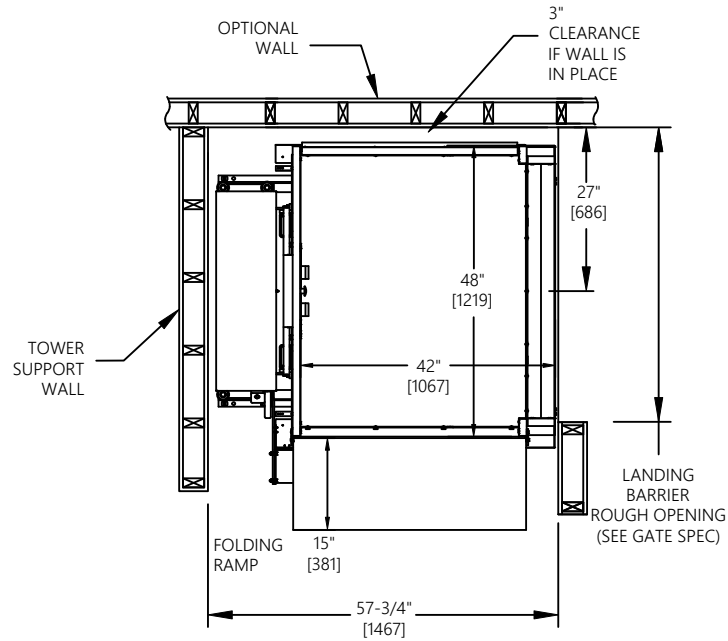
NON-LOAD-BEARING BACKUP SAFETY NUT

LIFTING RANGE [LR]	TOWER HEIGHT [TH]	
	SHORT COVER	TALL COVER
28" [711]	50 1/2" [1283]	6 1/2" [1562]

☐ Accepted as Shown
☐ Revise and Resubmit
☐ Accepted as Modified
 Date: _____
 Per: _____

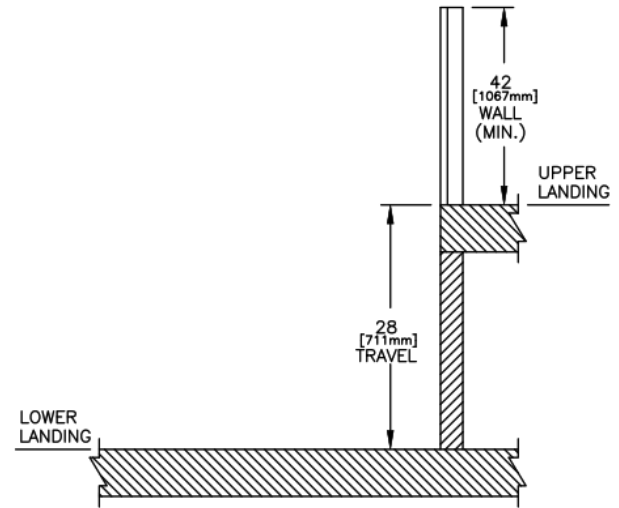
JOB No.	TOTAL TRAVEL	28 INCHES 711 mm	No. OF LANDINGS 2		Model	APEVPLR28ADJLAL
DESCRIPTION	28 RESIDENTIAL VPL - FREEDOM JOURNEY LIFT-ADJACENT- LEFT ACCESS				INSTALLATION DETAILS AND SPECIFICATIONS	
ARCHITECT						
GENERAL CONTRACTOR				SCALE: N.T.S.	DRAWING No. 1/2 4248-90-L	REV 00

PLAN VIEW



TRAVEL DIMENSIONS

☐ Accepted as Shown
☐ Revise and Resubmit
☐ Accepted as Modified
 Date: _____
 Per: _____



LANDING BARRIER TYPE	ROUGH OPENING WIDTH	ROUGH OPENING HEIGHT
36x42 STEEL GATE	44½" [1130]	N/A
36x42 ALUM & GLASS GATE	44½" [1130]	N/A

JOB No.	TOTAL TRAVEL	28 711	INCHES mm	No. OF LANDINGS 2		Model	APEVPLR28ADJLAL	
DESCRIPTION 28 RESIDENTIAL VPL - FREEDOM JOURNEY LIFT-ADJACENT- LEFT ACCESS						INSTALLATION DETAILS AND SPECIFICATIONS		
ARCHITECT								
GENERAL CONTRACTOR					SCALE: N.T.S.	DRAWING No. 1/2 4248-90-L		REV 00