

SPECIFICATIONS:

- 34" x 54" LIFT PLATFORM
- 55" x 54" FOOTPRINT
- 74.5" HEIGHT
- 14" - 52" LIFT RANGE
- MAXIMUM LOAD 550 lbs [250 kg].
- 8 FEET/MINUTE [2.4 METRES/MINUTE] LIFT SPEED
- SCREW NUT WORM GEAR DRIVE
- MOTOR: 1/2 H.P. 110V A.C.
- POWER SUPPLY: 110V/1PH/60HZ C/W 15A FUSED DISCONNECT
- NON-LOAD BEARING BACKUP SAFETY NUT ON LIFT SHAFT
- SOLID SIDE WALL/HANDRAIL ON CARRIAGE
- ZERO-LOAD START IN BOTTOM POSITION

☐ Accepted as Shown

☐ Revise and Resubmit


☐ Accepted as Modified

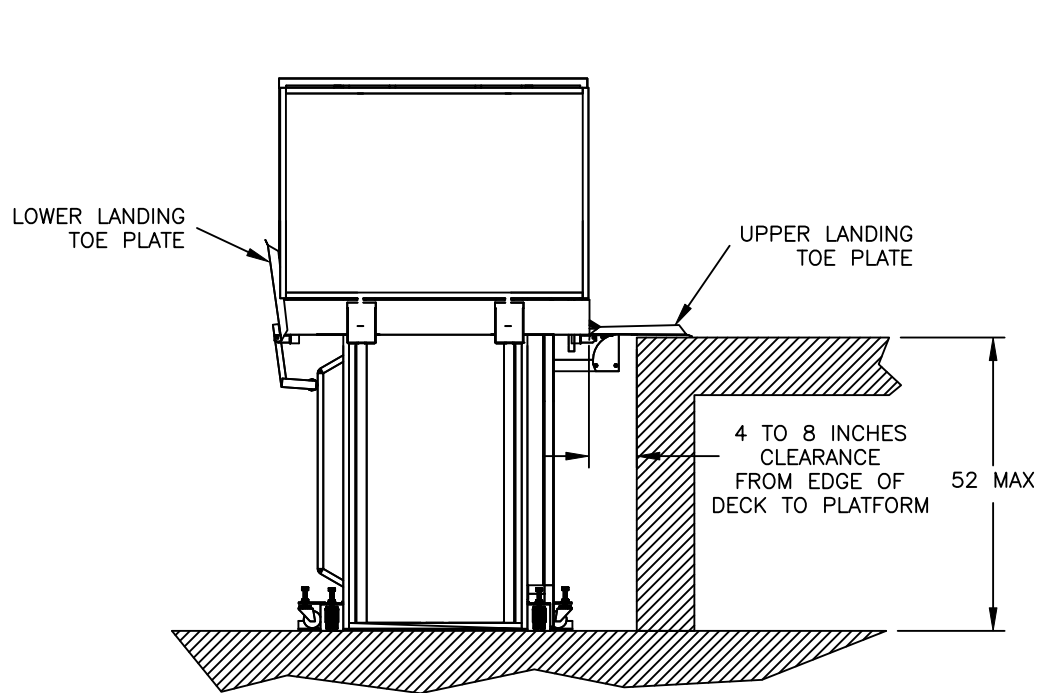
Date: _____

Per: _____

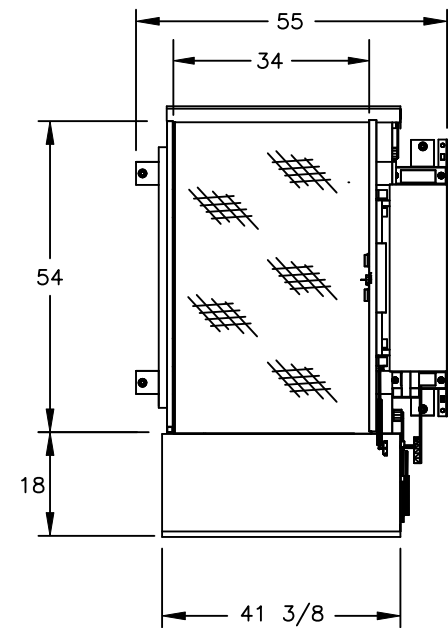
APE52PORTABLE-L

NOTES:
- Dimensions are in inches


					C	RAM	28/3/18	CHANGE DIMENSIONS FOR 750 DESIGN				
					B	BH	28/3/06	CORRECT DECK DIMENSIONS				
JOB No.		TOTAL TRAVEL	52 [1321]	INCHES mm	No. OF LANDINGS		2		<div></div>			
LOCATION		PORTABLE TRUS<T>LIFT SAMPLE DRAWING										
ARCHITECT												
GENERAL CONTRACTOR												
					DWN. BY:		AJK		INSTALLATION DETAILS AND SPECIFICATIONS			
					CHECKED BY:							
					SCALE:		N.T.S.		DATE:	05/07/21	DRAWING No. 52PORTABLE 1/2	REV C



SECTION A-A



PLAN VIEW SECTION

					C	RAM	28/3/18	CHANGE DIMENSIONS FOR 750 DESIGN										
					B	BH	28/3/06	CORRECT DECK DIMENSIONS										
JOB No.		TOTAL TRAVEL	52 [1321]	INCHES mm	No. OF LANDINGS		2		<div> <i>by Accessibility Professionals</i></div>									
LOCATION		PORTABLE TRUS<T>LIFT SAMPLE DRAWING																
ARCHITECT																		
GENERAL CONTRACTOR																		
					DWN. BY:		AJK		INSTALLATION DETAILS AND SPECIFICATIONS									
					CHECKED BY:													
					SCALE:		N.T.S.		DATE:		05/07/21		DRAWING No. 52PORTABLE		2/2		REV C	