

APEB52STRCOMLAR

SPECIFICATIONS:


- 34" x 54" [864mm x 1372mm] LIFT PLATFORM
- 49" x 54" [1245mm x 1372mm] FOOTPRINT
- 85-1/2" [2172mm] TOWER HEIGHT
- 0" – 52" [0mm – 1321mm] LIFT RANGE
- MAXIMUM LOAD 750 lbs. [340 Kg.]
- 8 F.P.M [0.04 M/s] LIFT SPEED
- SCREW NUT SYNCHRONOUS BELT DRIVE
- MOTOR: 1/2 H.P. 110V A.C.
- POWER SUPPLY: 110V/1PH/60HZ C/W 15A FUSED DISCON.
- NON-LOAD BEARING BACKUP SAFETY NUT ON LIFT SHAFT
- ZERO-LOAD START IN BOTTOM POSITION
- SOLID PLATFORM & UNDER PLATFORM SAFETY PLATE

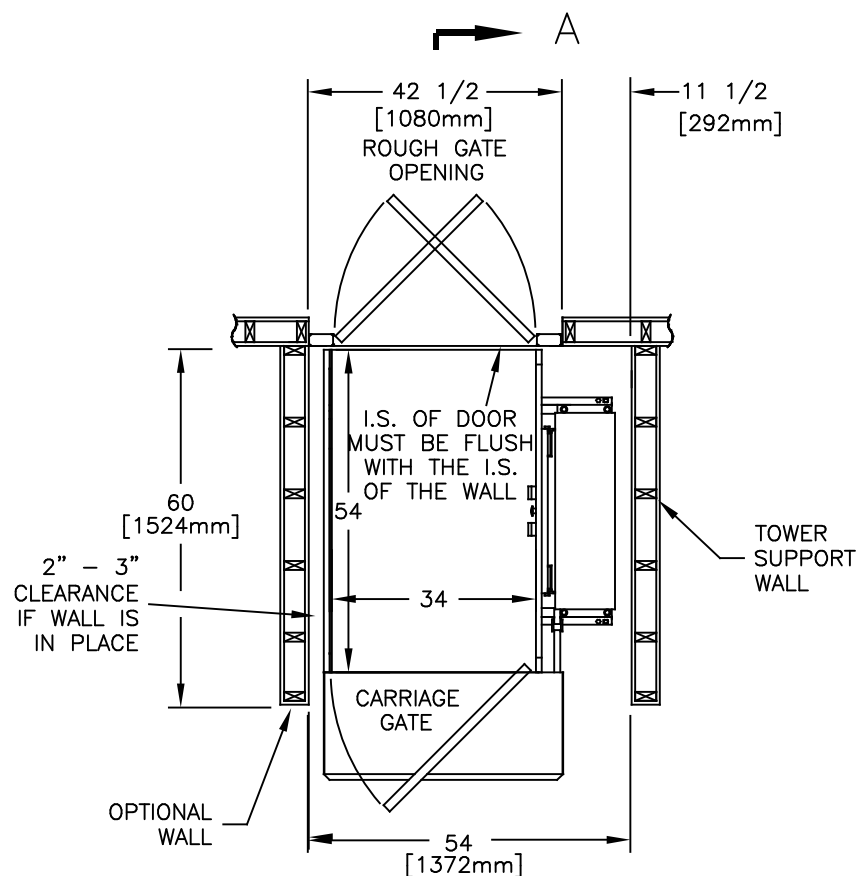
*DOORS: – UPPER-RAM GATE
LOWER-CARGATE

<input type="checkbox"/> Accepted as Shown
<input type="checkbox"/> Revise and Resubmit
<input type="checkbox"/> Accepted as Modified
Date: _____
Per: _____

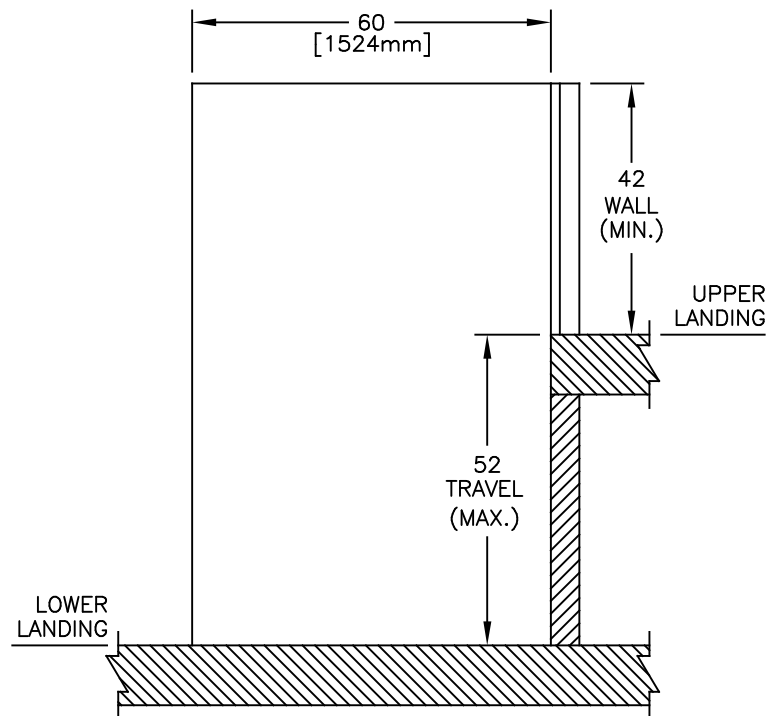
NOTES:

- Dimensions are in inches
- Designed and built to meet ASME A18.1–2014 Safety Code

JOB No.	TOTAL TRAVEL	52 [1321]	INCHES mm	No. OF LANDINGS	2	<div> <i>by Accessibility Professionals</i></div>				
LOCATION	SAMPLE DRAWINGS vertical unenclosed lift					DWN. BY: BG		INSTALLATION DETAILS AND SPECIFICATIONS		
ARCHITECT						CHECKED BY:				
GENERAL CONTRACTOR						SCALE: N.T.S.		DATE: 10/MAR/14	DRAWING No. 52UCRDUGNCST-7501/2	REV A



PLAN VIEW SECTION



SECTION A-A

JOB No.	TOTAL TRAVEL 52 [1321] INCHES mm	No. OF LANDINGS 2	<div>FREEOM Lift Systems</div> <div>by Accessibility Professionals</div>			
LOCATION	SAMPLE DRAWINGS vertical unenclosed lift					
ARCHITECT			DWN. BY: BG	INSTALLATION DETAILS AND SPECIFICATIONS		
			CHECKED BY:			
GENERAL CONTRACTOR			SCALE: N.T.S.	DATE: 10/MAR/14	DRAWING No. 52UCRDUGNCST-750 2/2	REV A