

SPECIFICATIONS:

- 34" x 54" [864mm x 1372mm] LIFT PLATFORM
- 49" x 54" [1245mm x 1372mm] FOOTPRINT
- 74 1/2" [1892mm] TOWER HEIGHT
- 0" - 52" [0mm - 1321mm] LIFT RANGE
- MAXIMUM LOAD 750 lbs. [340 Kg.]
- 8 F.P.M [0.04 M/S] LIFT SPEED
- SCREW NUT SYNCHRONOUS BELT DRIVE
- MOTOR: 1/2 H.P. 110V A.C.
- POWER SUPPLY: 110V/1PH/60HZ C/W 15A FUSED DISCON.
- NON-LOAD BEARING BACKUP SAFETY NUT ON LIFT SHAFT
- ZERO-LOAD START IN BOTTOM POSITION

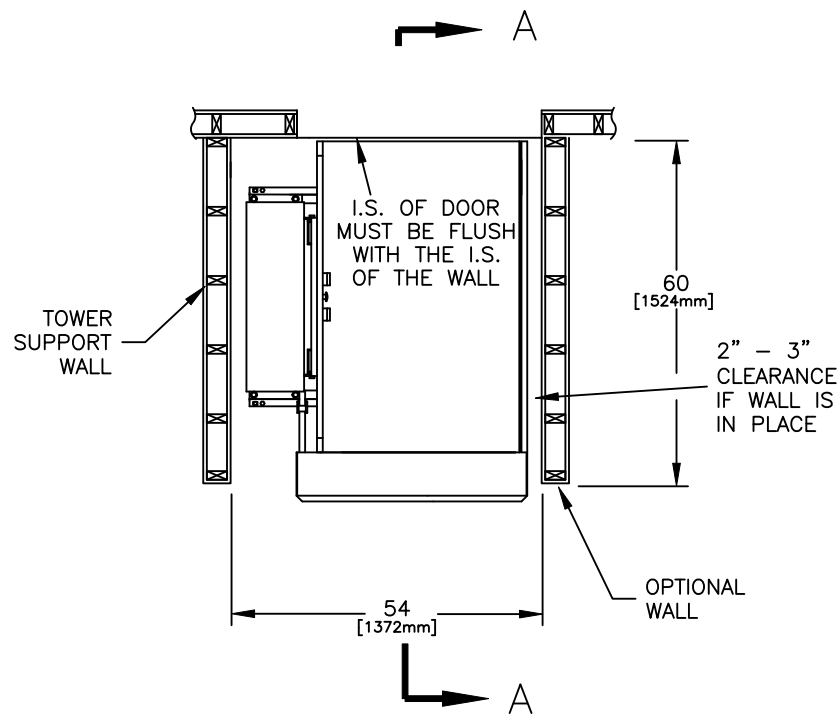
APEB52STRLAL

<input type="checkbox"/> Accepted as Shown
<input type="checkbox"/> Revise and Resubmit
<input type="checkbox"/> Accepted as Modified
Date: _____
Per: _____

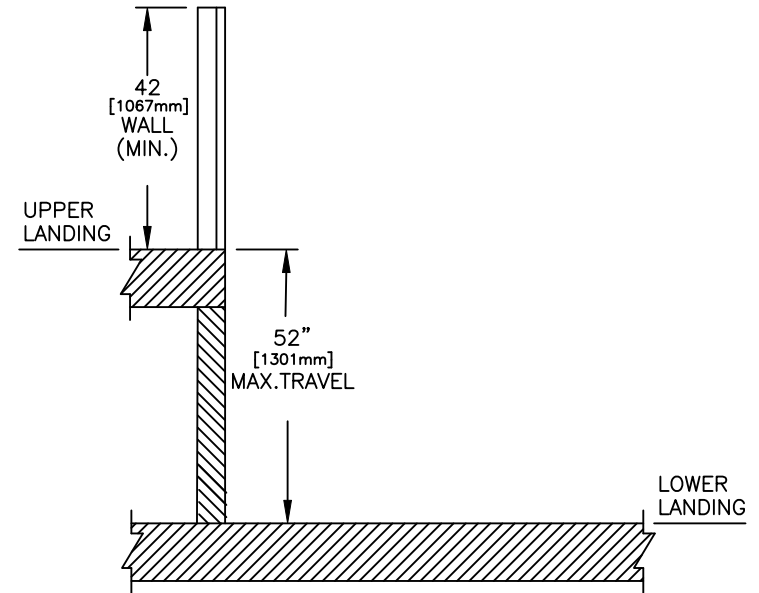
NOTES:

- Dimensions are in inches and [mm]

JOB No.	TOTAL TRAVEL	52 1321	INCHES mm	No. OF LANDINGS	2	<div><div>FREE OM</div><div>LiftSystems</div><div>by Accessibility Professionals</div></div>				
LOCATION	STRAIGHT THRU ACCESS SAMPLE DRAWING					DWN. BY: AJK		INSTALLATION DETAILS AND SPECIFICATIONS		
ARCHITECT						CHECKED BY:				
GENERAL CONTRACTOR						SCALE: N.T.S.	DATE: 05/Jul/2021	DRAWING No. 28CRLDUGNNST	1/2	REV A



PLAN VIEW SECTION



SECTION A-A

JOB No.	TOTAL TRAVEL	52 1321	INCHES mm	No. OF LANDINGS	2	<div><div><div>FREE</div><div>OM</div></div><div>LiftSystems</div><div>by Accessibility Professionals</div></div>					
LOCATION	STRAIGHT THRU ACCESS SAMPLE DRAWING										
ARCHITECT						DWN. BY: AJK		INSTALLATION DETAILS AND SPECIFICATIONS			
						CHECKED BY:					
GENERAL CONTRACTOR						SCALE: N.T.S.		DATE: 05/Jul/2021	DRAWING No.	2/2	REV A
								28CRLDUGNNST			