

## APEB52STRCOMLAL

### SPECIFICATIONS:

- 34" x 54" [864mm x 1372mm] LIFT PLATFORM
- 49" x 54" [1245mm x 1372mm] FOOTPRINT
- 85-1/2" [2172mm] TOWER HEIGHT
- 0" - 52" [0mm - 1321mm] LIFT RANGE
- MAXIMUM LOAD 750 lbs. [340 Kg.]
- 8 F.P.M [0.04 M/S] LIFT SPEED
- SCREW NUT SYNCHRONOUS BELT DRIVE
- MOTOR: 1/2 H.P. 110V A.C.
- POWER SUPPLY: 110V/1PH/60HZ C/W 15A FUSED DISCON.
- NON-LOAD BEARING BACKUP SAFETY NUT ON LIFT SHAFT
- ZERO-LOAD START IN BOTTOM POSITION
- SOLID PLATFORM & UNDER PLATFORM SAFETY PLATE

\*DOORS: - UPPER-RAM GATE  
LOWER-CARGATE

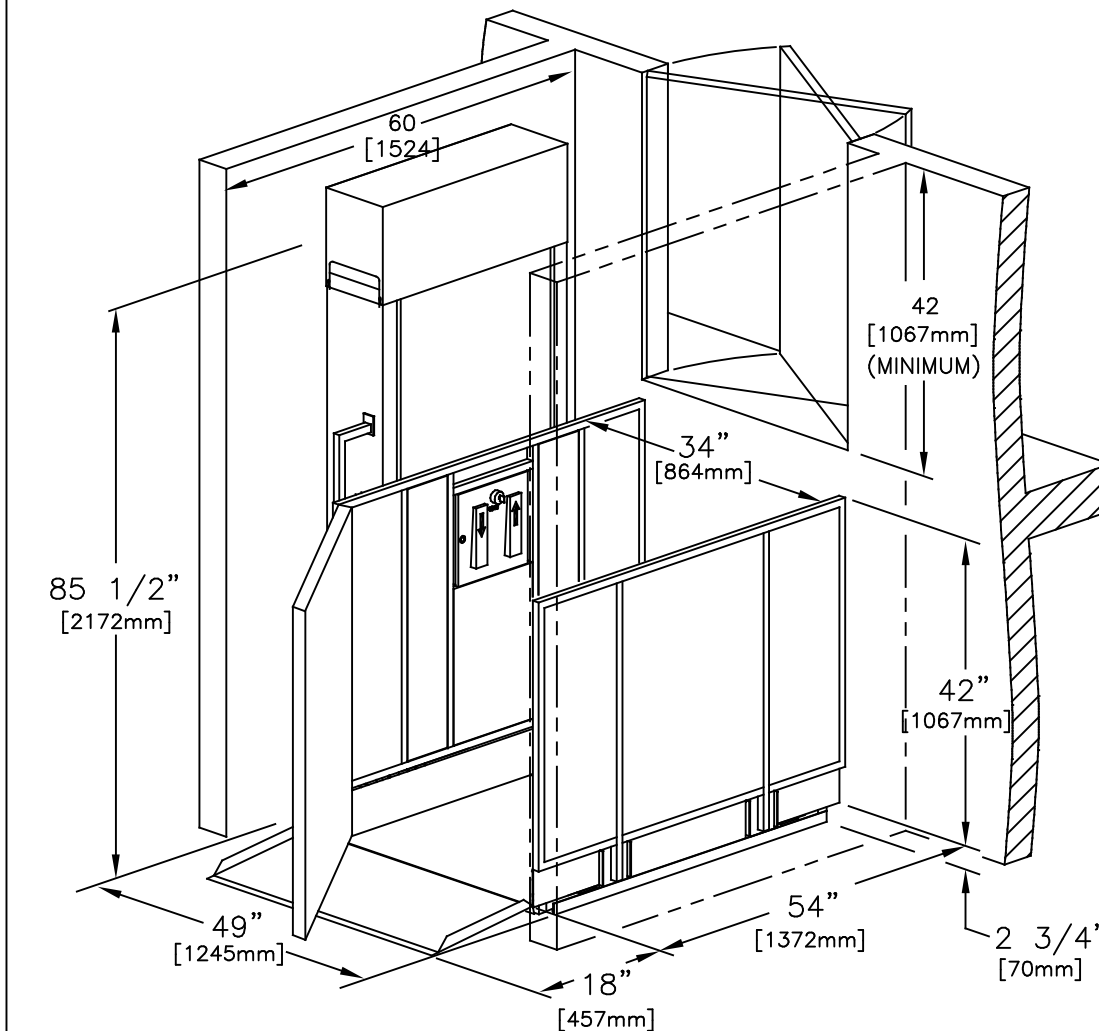
- ☐ Accepted as Shown  
☐ Revise and Resubmit  
☐ Accepted as Modified


Date: \_\_\_\_\_

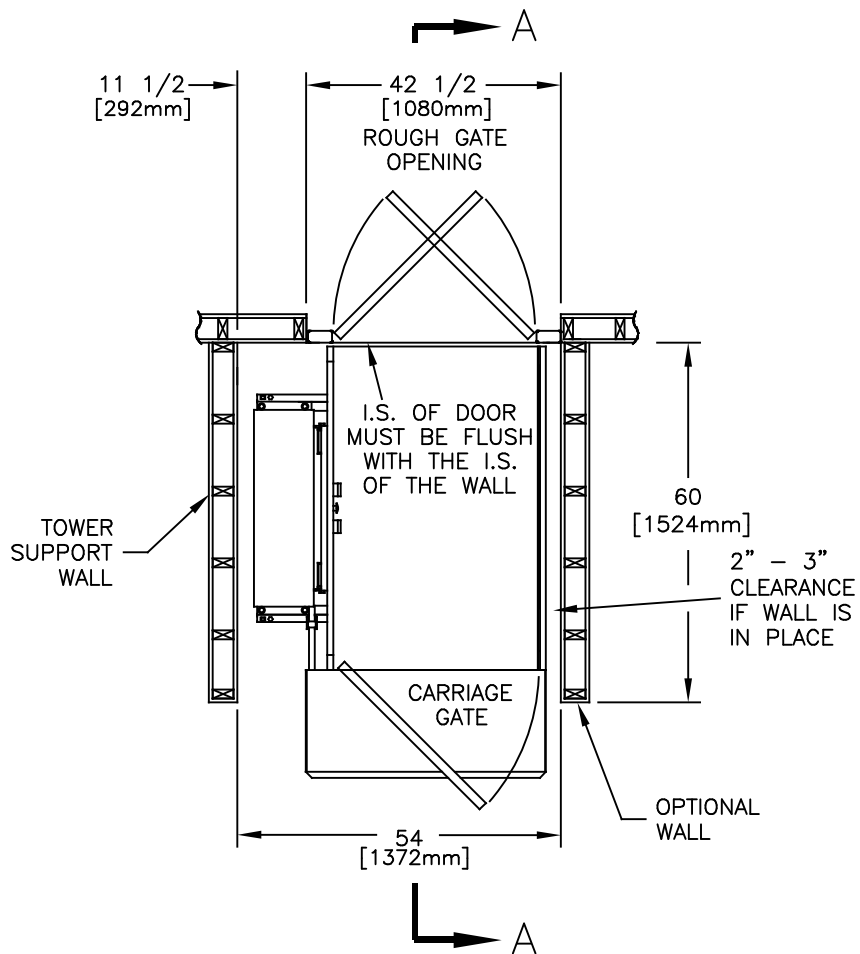
Per: \_\_\_\_\_

### NOTES:

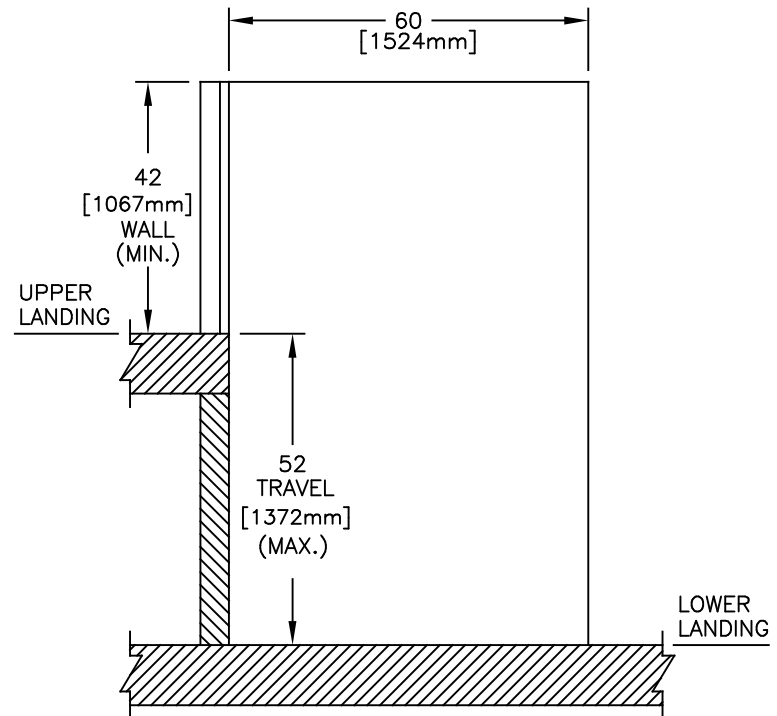
- Dimensions are in inches
- Designed and built to meet ASME A18.1-2014 Safety Code



JOB No.	TOTAL TRAVEL	52 1321	INCHES mm	No. OF LANDINGS	2	<div> by Accessibility Professionals</div>				
LOCATION	sample drawings vertical unenclosed lift					DWN. BY: R.A.MEUNIER		INSTALLATION DETAILS AND SPECIFICATIONS		
ARCHITECT						CHECKED BY:				
GENERAL CONTRACTOR						SCALE: N.T.S.		DATE: 21/Jan/14	DRAWING No. 1/2 52UCLDUGNCST-750	REV A



PLAN VIEW SECTION



SECTION A-A

JOB No.	TOTAL TRAVEL	52 1321	INCHES mm	No. OF LANDINGS	2	<div><div>FREEOM</div><div>Lift Systems</div><div>by Accessibility Professionals</div></div>				
LOCATION	sample drawings unenclosed vertical lift					DWN. BY: R.A.MEUNIER		INSTALLATION DETAILS AND SPECIFICATIONS		
ARCHITECT						CHECKED BY:				
GENERAL CONTRACTOR						SCALE: N.T.S.		DATE: 21/Jan/14	DRAWING No. 2/2 52UCLDUGNCST-750	REV A