

**TRUS-T-LIFT DIMENSIONS**

## APEB52ADJCOMLAR

### SPECIFICATIONS:

- 40" x 54" [1016mm x 1372mm] LIFT PLATFORM
- 54" x 54" [1372mm x 1372mm] FOOTPRINT
- 85 1/2" [2172mm] TOWER HEIGHT
- 0" - 52" [0mm - 1321mm] LIFT RANGE
- MAXIMUM LOAD 750 lbs. [340 Kg.]
- 8 F.P.M [0.04 M/S] LIFT SPEED
- SCREW NUT SYNCHRONOUS BELT DRIVE
- MOTOR: 1/2 H.P. 110V A.C.
- POWER SUPPLY: 110V/1PH/60HZ C/W 15A FUSED DISCON.
- NON-LOAD BEARING BACKUP SAFETY NUT ON LIFT SHAFT
- ZERO-LOAD START IN BOTTOM POSITION
- 42" HIGH GATE (SWING) ON UPPER LANDING
- 42" HIGH CARRIAGE GATE (SWING)
- SOLID PLATFORM & UNDER PLATFORM SAFETY PLATE

☐ Accepted as Shown
 ☐ Revise and Resubmit
 ☐ Accepted as Modified

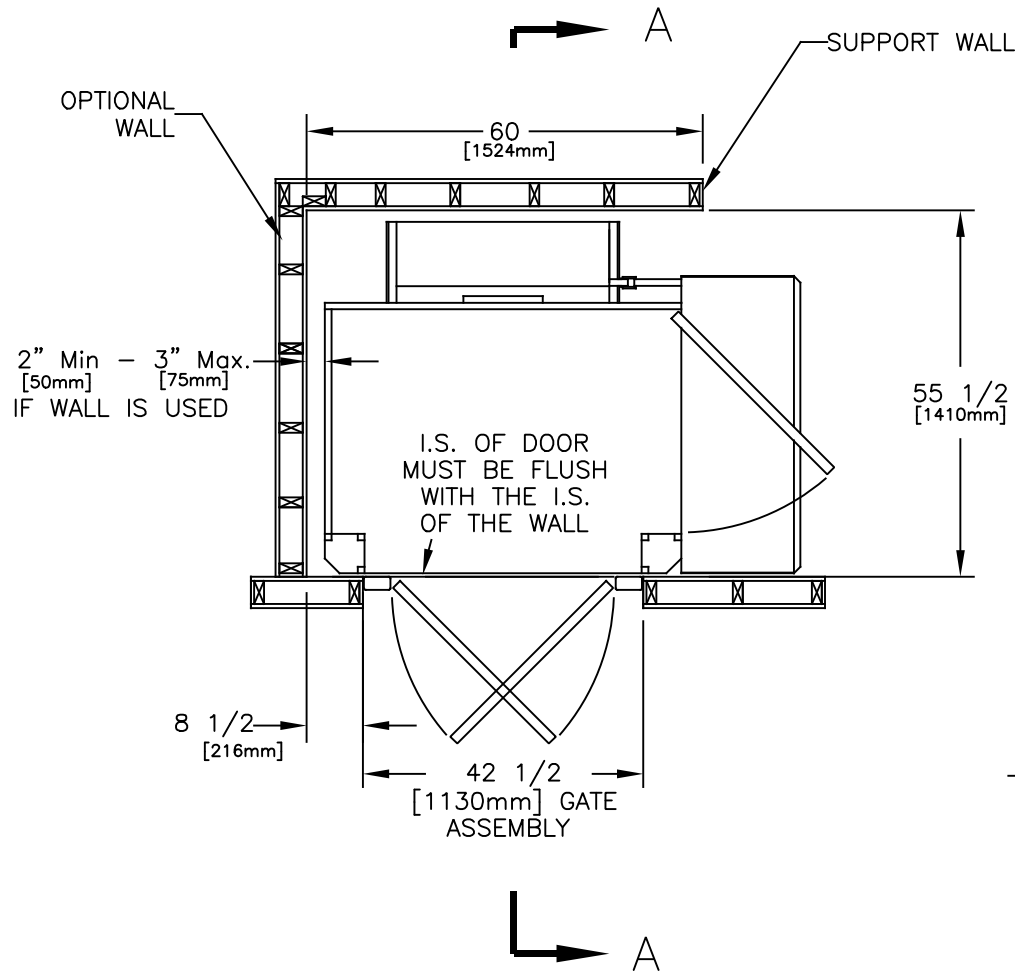
Date: \_\_\_\_\_
   
 Per: \_\_\_\_\_

- NOTES:**
- Dimensions are in inches & [mm]
  - Designed to meet ASME A18.1-2008 Safety Code

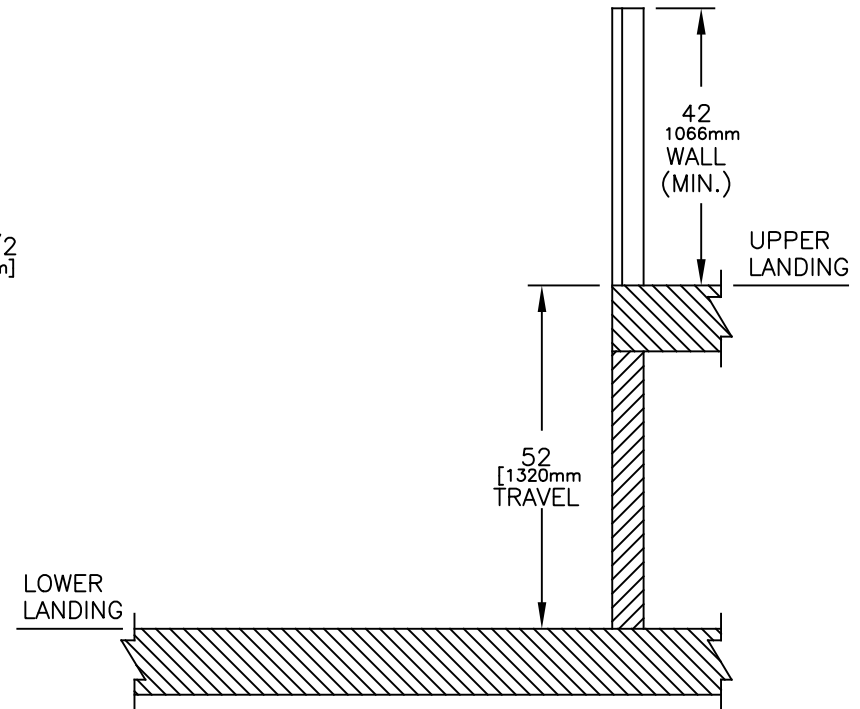
JOB No.	TOTAL TRAVEL 52	INCHES mm	No. OF LANDINGS 2
LOCATION	SIDE ACCESS WITH CARRIAGE GATE SAMPLE DRAWINGS		
ARCHITECT			
GENERAL CONTRACTOR			

DWN. BY:	INSTALLATION DETAILS AND SPECIFICATIONS		
CHECKED BY:			
SCALE:	DATE:	DRAWING No.	REV
N.T.S.	16/Dec/16	52UCRDUGNCAT-750	1/2 A

APEB52ADJCOMLAR




PLAN VIEW SECTION



SECTION A-A

JOB No.	TOTAL TRAVEL 52	INCHES mm	No. OF LANDINGS 2
LOCATION	SIDE ACCESS WITH CARRIAGE GATE SAMPLE DRAWINGS		
ARCHITECT			
GENERAL CONTRACTOR			

<div><p><b><i>FREEDOM</i></b> Lift Systems <i>by Accessibility Professionals</i></p></div>			
DWN. BY: R.A.MEUNIER		INSTALLATION DETAILS AND SPECIFICATIONS	
CHECKED BY:			
SCALE: N.T.S.	DATE: 16/Dec/16	DRAWING No. 2/2 52UCRDUGNCAT-750	REV A