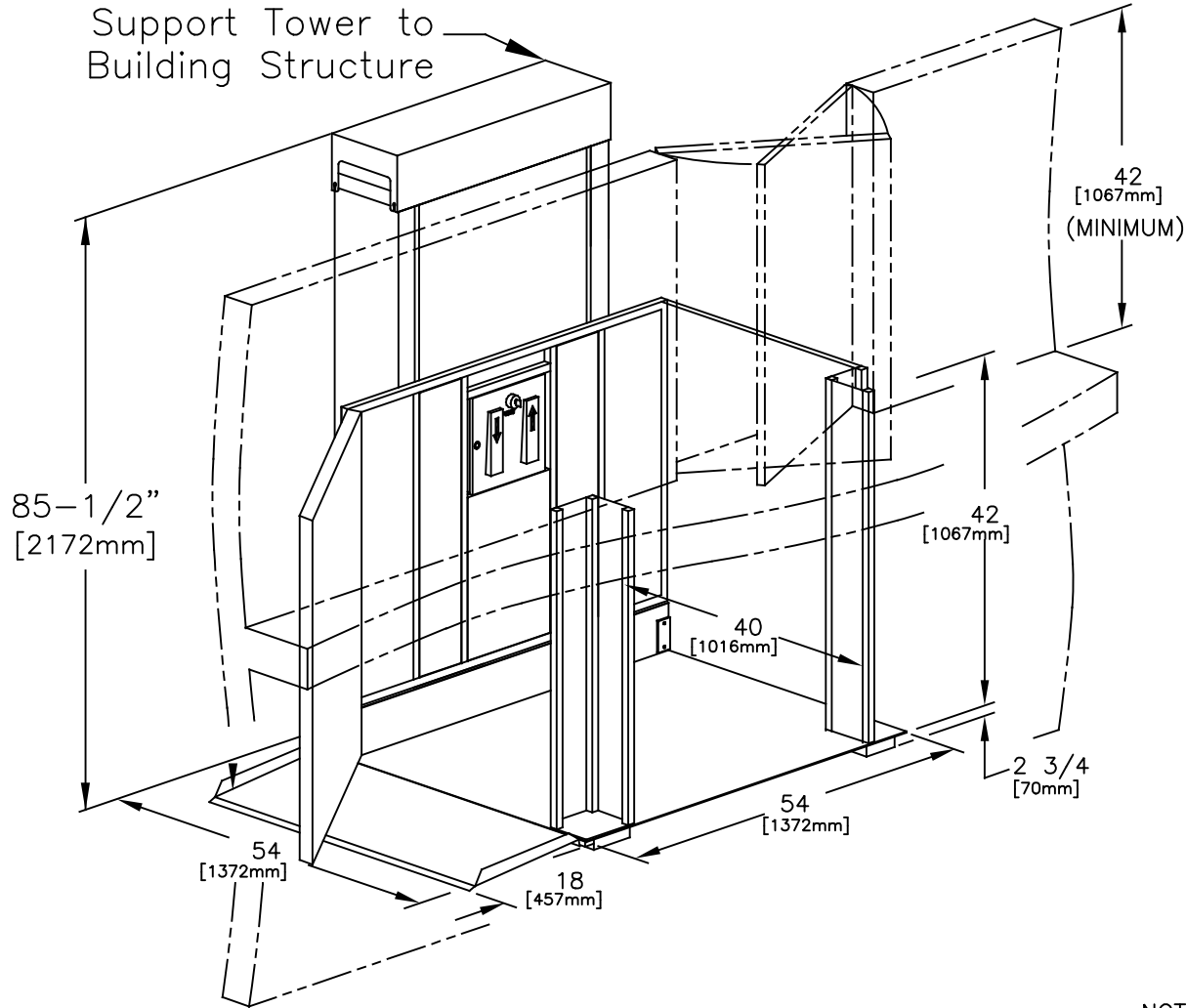


Support Tower to
Building Structure



APEB52ADJCOMLAL

SPECIFICATIONS:

- 40" x 54" [1016mm x 1372mm] LIFT PLATFORM
- 54" x 54" [1372mm x 1372mm] FOOTPRINT
- 85 1/2" [2172mm] TOWER HEIGHT
- 0" - 52" [0mm - 1321mm] LIFT RANGE
- MAXIMUM LOAD 750 lbs. [340 Kg.]
- 8 F.P.M [0.04 m/s] LIFT SPEED
- SCREW NUT SYNCHRONOUS BELT DRIVE
- MOTOR: 1/2 H.P. 110V A.C.
- POWER SUPPLY: 110V/1PH/60HZ C/W 15A FUSED DISCON.
- NON-LOAD BEARING BACKUP SAFETY NUT ON LIFT SHAFT
- ZERO-LOAD START IN BOTTOM POSITION
- 42" HIGH GATE (SWING) ON UPPER LANDING
- 42" HIGH CARRIAGE GATE (SWING)
- SOLID PLATFORM & UNDER PLATFORM SAFETY PLATE

☐ Accepted as Shown

☐ Revise and Resubmit

☐ Accepted as Modified


Date: _____

Per: _____

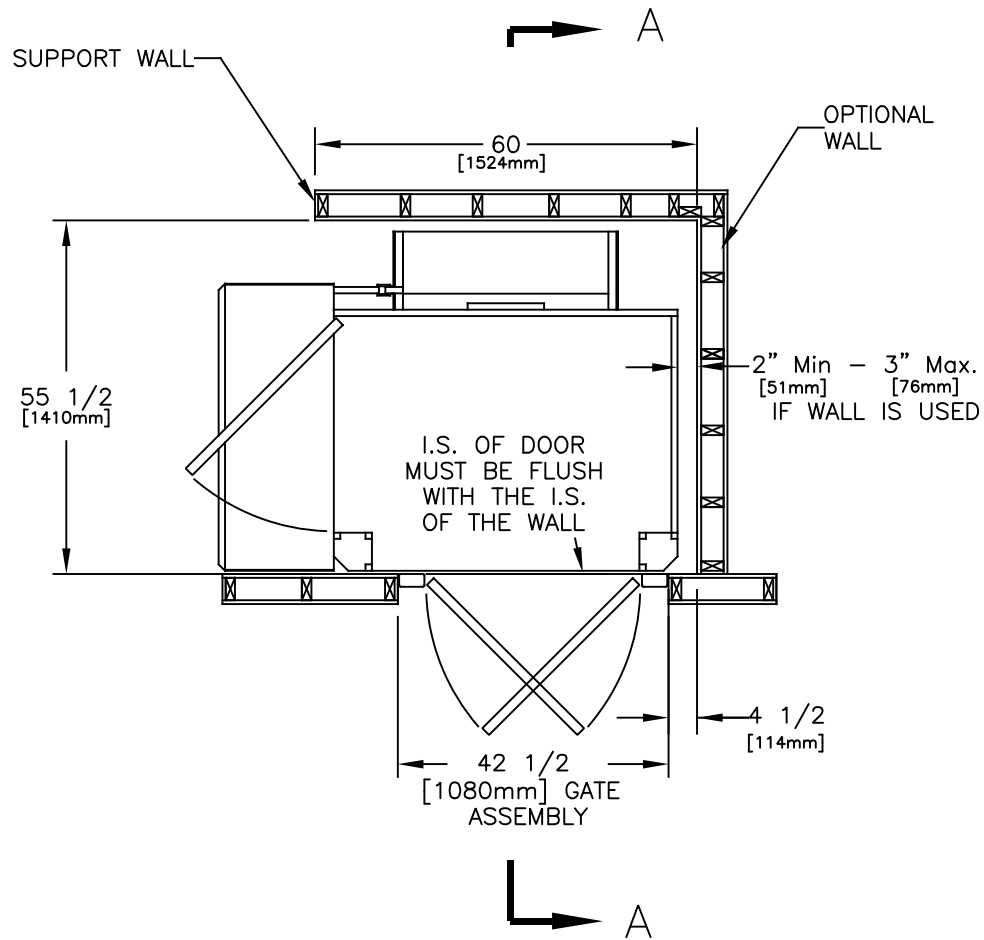
NOTES:

- Dimensions are in inches & [mm]
- Designed to meet CSA B355

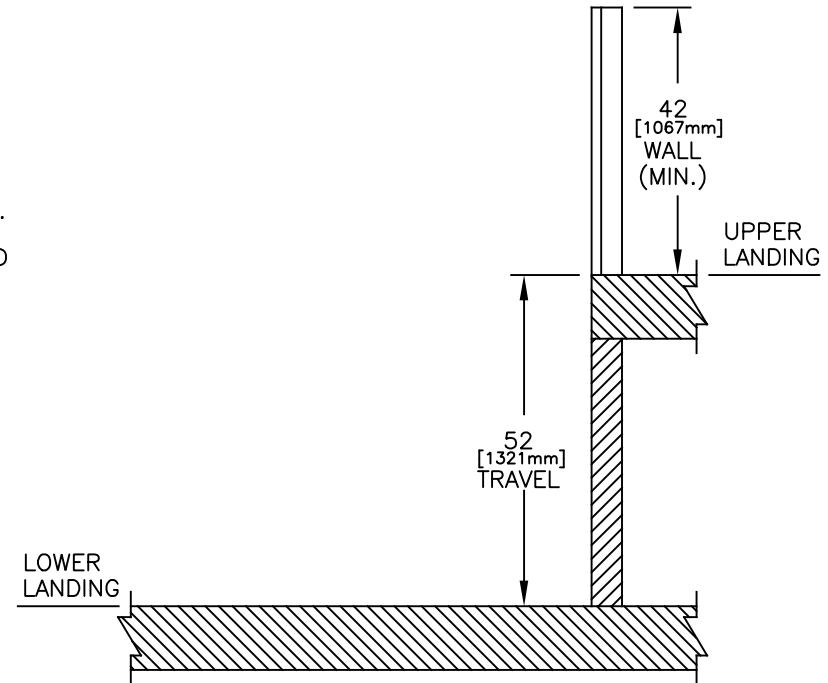
TRUS-T-LIFT DIMENSIONS

JOB No.		TOTAL TRAVEL 52 1321	INCHES mm	No. OF LANDINGS 2	<div>by Accessibility Professionals</div>				
LOCATION		SIDE ACCESS WITH CARRIAGE GATE SAMPLE DRAWINGS			DWN. BY: VZ		INSTALLATION DETAILS AND SPECIFICATIONS		
ARCHITECT					CHECKED BY:				
GENERAL CONTRACTOR					SCALE: N.T.S.		DATE: 16/Dec/16	DRAWING No. 1/2 52UCLDUGNCAT-750	REV A

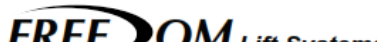
APEB52ADJCOMLAL



PLAN VIEW SECTION



SECTION A-A

JOB No.	TOTAL TRAVEL 52 1321 INCHES mm	No. OF LANDINGS 2	<div> by Accessibility Professionals</div>						
LOCATION	SIDE ACCESS WITH CARRIAGE GATE SAMPLE DRAWINGS					<div>DWN. BY: VZ</div> <div>CHECKED BY:</div> <div>SCALE: N.T.S.</div>	<div>INSTALLATION DETAILS AND SPECIFICATIONS</div> <div>DATE: 16/Dec/16</div> <div>DRAWING No. 2/2 52UCLDUGNCAT-750</div> <div>REV A</div>		
ARCHITECT									
GENERAL CONTRACTOR									