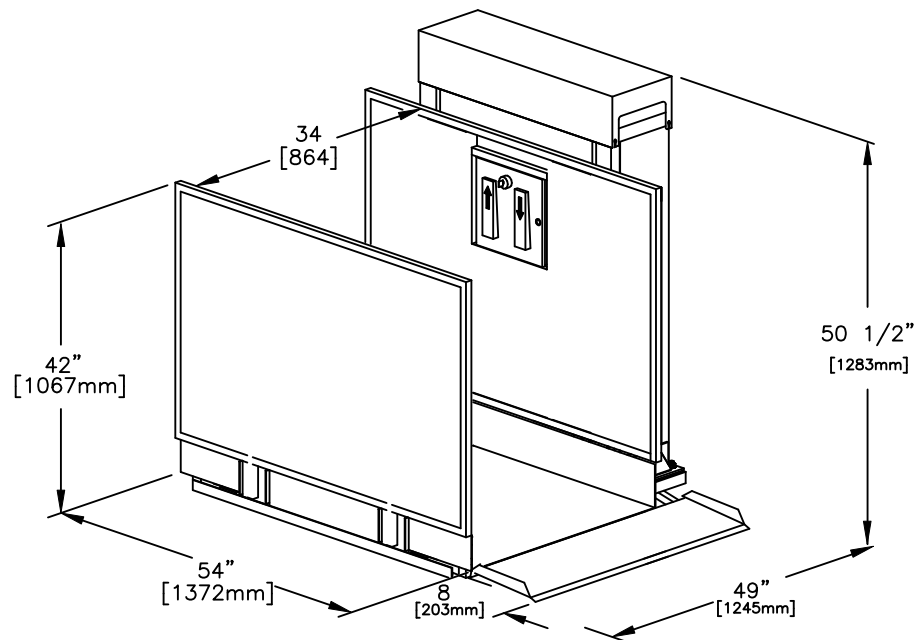



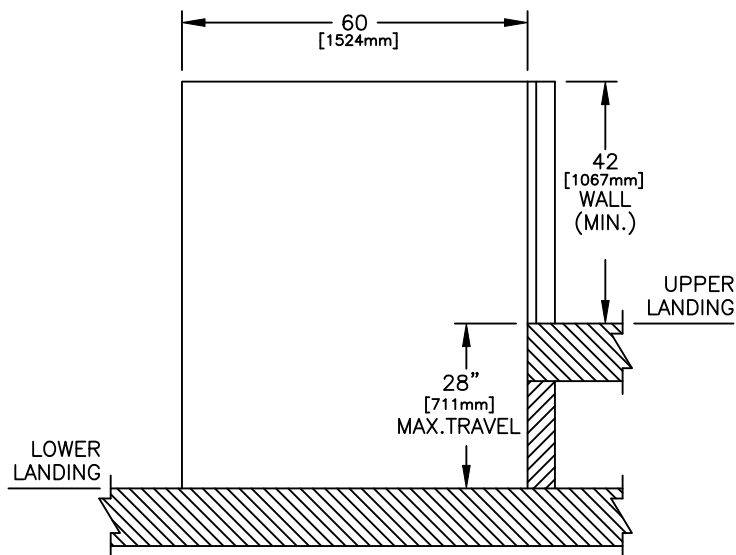
- 34" x 54" [864mm x 1372mm] LIFT PLATFORM
- 49" x 54" [1245mm x 1372mm] FOOTPRINT
- 50 1/2" [1283mm] TOWER HEIGHT
- 0" - 28" [0mm - 711mm] LIFT RANGE
- MAXIMUM LOAD 750 lbs. [340 Kg.]
- 8 F.P.M [0.04 m/s] LIFT SPEED
- SCREW NUT SYNCHRONOUS BELT DRIVE
- MOTOR: 1/2 H.P. 110V A.C.
- POWER SUPPLY: 110V/1PH/60HZ C/W 15A FUSED DISCON.
- NON-LOAD BEARING BACKUP SAFETY NUT ON LIFT SHAFT
- ZERO-LOAD START IN BOTTOM POSITION



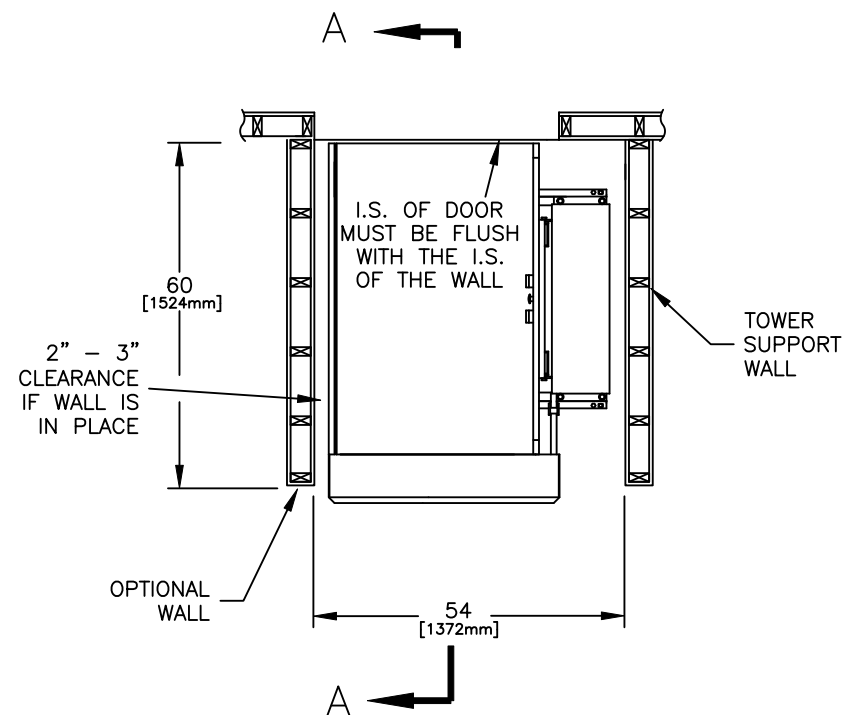
☐ Accepted as Shown  
☐ Revise and Resubmit  
☐ Accepted as Modified  
Date: \_\_\_\_\_  
Per: \_\_\_\_\_

– Dimensions are in inches and [mm]


JOB No.	TOTAL TRAVEL 28 711	INCHES mm	No. OF LANDINGS 2				
LOCATION	STRAIGHT THRU ACCESS SAMPLE DRAWING						
ARCHITECT				DWN. BY: AJK	INSTALLATION DETAILS AND SPECIFICATIONS		
GENERAL CONTRACTOR				CHECKED BY:			
				SCALE: N.T.S.	DATE: 05/Jul/2021	DRAWING No. 28CRRDUGNNST	1/2 REV A



SECTION A-A



PLAN VIEW SECTION

JOB No.	TOTAL TRAVEL 28 711	INCHES mm	No. OF LANDINGS 2	<div>TRUSLIFT</div>				
LOCATION	STRAIGHT THRU ACCESS SAMPLE DRAWING							
ARCHITECT				DWN. BY: AJK		TRUS-T-LIFT ELEVATOR INSTALLATION DETAILS AND SPECIFICATIONS		
				CHECKED BY:				
GENERAL CONTRACTOR				SCALE: N.T.S.		DATE: 05/Jul/2021	DRAWING No. 2/2 28CRRDUGNNST	REV A