

SPECIFICATIONS:

- 40" x 54" [1016mm x 1372mm] LIFT PLATFORM
- 54" x 54" [1372mm x 1372mm] FOOTPRINT
- 50 1/2" [1283mm] TOWER HEIGHT
- 0" - 28" [0mm - 711mm] LIFT RANGE
- MAXIMUM LOAD 750 lbs. [340 kg.]
- 8 F.P.M [0.04 M/S] LIFT SPEED
- SCREW NUT SYNCHRONOUS BELT DRIVE
- MOTOR: 1/2 H.P. 110V A.C.
- POWER SUPPLY: 110V/1PH/60HZ C/W 15A FUSED DISCON.
- NON-LOAD BEARING BACKUP SAFETY NUT ON LIFT SHAFT
- ZERO-LOAD START IN BOTTOM POSITION

APEB28ADJLAR


- ☐ Accepted as Shown
- ☐ Revise and Resubmit
- ☐ Accepted as Modified

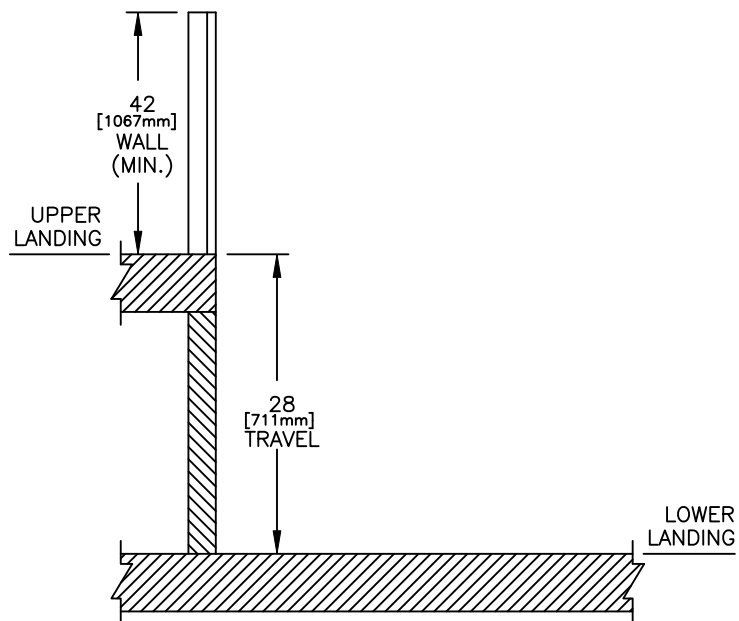
Date: _____

Per: _____

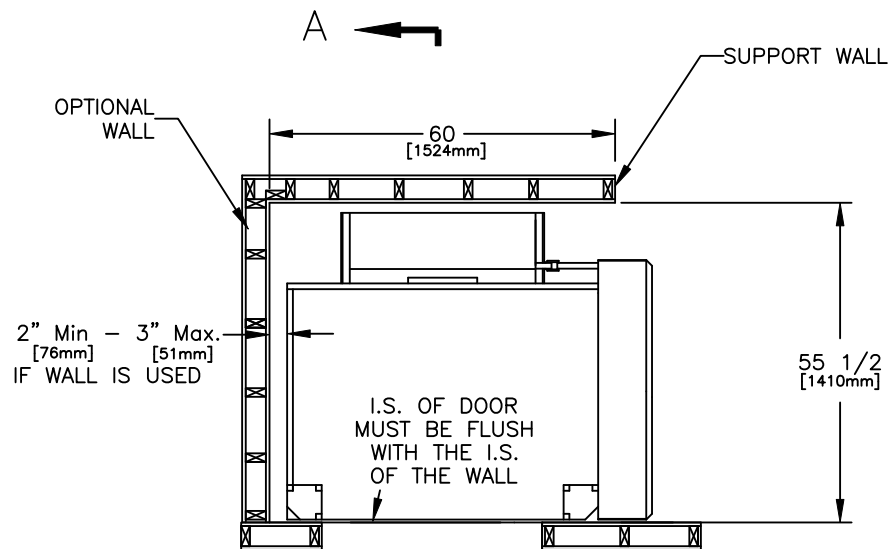
NOTES:

- Dimensions are in inches & [mm]

JOB No.	TOTAL TRAVEL	28 711	INCHES mm	No. OF LANDINGS	2	<div> by Accessibility Professionals</div>			
LOCATION	ADJACENT ACCESS SAMPLE DRAWINGS					DWN. BY: AJK		INSTALLATION DETAILS AND SPECIFICATIONS	
ARCHITECT						CHECKED BY:			
GENERAL CONTRACTOR						SCALE: N.T.S.	DATE: 05 /Jul /2021	DRAWING No. 1/2 28CRRDUNNNAT-750	REV A




SECTION A-A



ASSEMBLY



PLAN VIEW SECTION

JOB No.		TOTAL TRAVEL	28 711	INCHES mm	No. OF LANDINGS	2	<div> by Accessibility Professionals</div>				
LOCATION	ADJACENT ACCESS SAMPLE DRAWINGS						DWN. BY: AJK		INSTALLATION DETAILS AND SPECIFICATIONS		
ARCHITECT							CHECKED BY:				
GENERAL CONTRACTOR							SCALE: N.T.S.	DATE: 05/Jul/2021	DRAWING No.	2/2	REV
									28CRRDUNNNAT-750	A	