

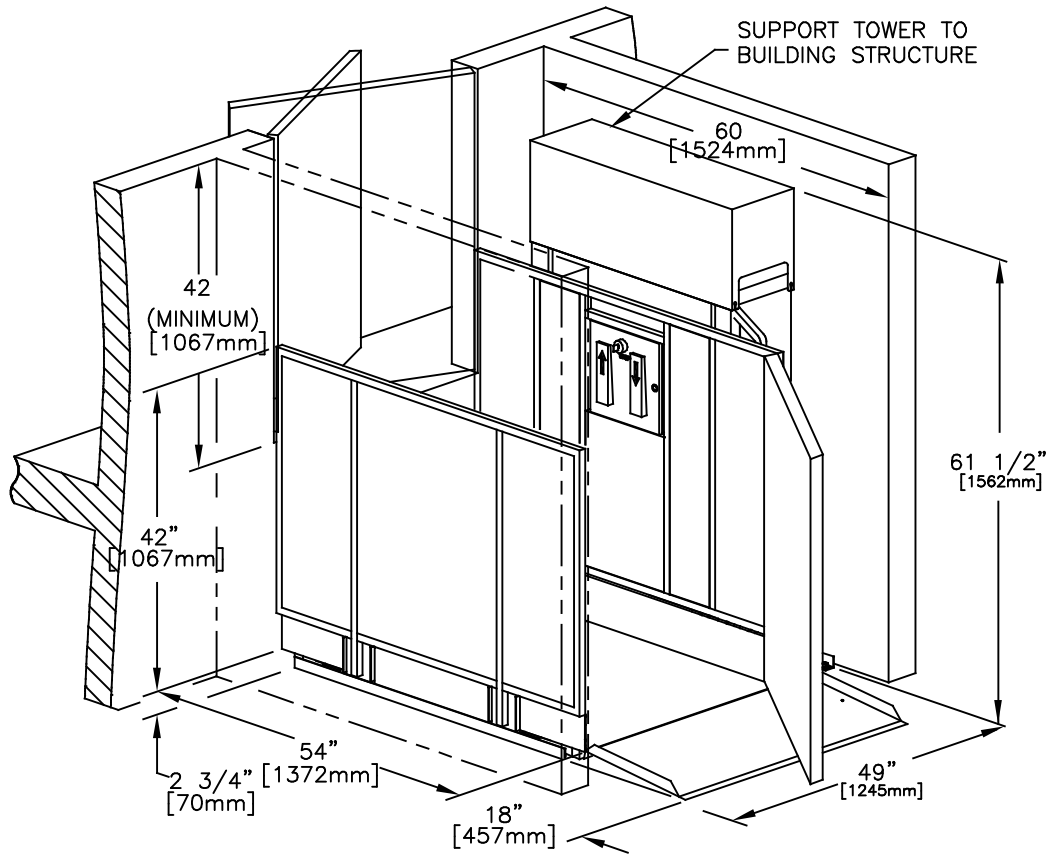
## APEB28STRCOMLAR

### SPECIFICATIONS:

- 34" x 54" [864mm x 1372mm] LIFT PLATFORM
- 49" x 54" [1245mm x 1372mm] FOOTPRINT
- 61 1/2" [1562mm] TOWER HEIGHT
- 0" - 28" [0mm - 711mm] LIFT RANGE
- MAXIMUM LOAD 750 lbs. [340 Kg.]
- 8 F.P.M [0.04 M/S] LIFT SPEED
- SCREW NUT SYNCHRONOUS BELT DRIVE
- MOTOR: 1/2 H.P. 110V A.C.
- POWER SUPPLY: 110V/1PH/60HZ C/W 15A FUSED DISCON.
- NON-LOAD BEARING BACKUP SAFETY NUT ON LIFT SHAFT
- ZERO-LOAD START IN BOTTOM POSITION
- SOLID PLATFORM & UNDER PLATFORM SAFETY PLATE

\*DESIGNED & BUILT TO MEET ASME-A18.1-2014 Safety Code

\*DOORS: - UPPER-RAM GATE  
LOWER-CARGATE




- ☐ Accepted as Shown
- ☐ Revise and Resubmit
- ☐ Accepted as Modified

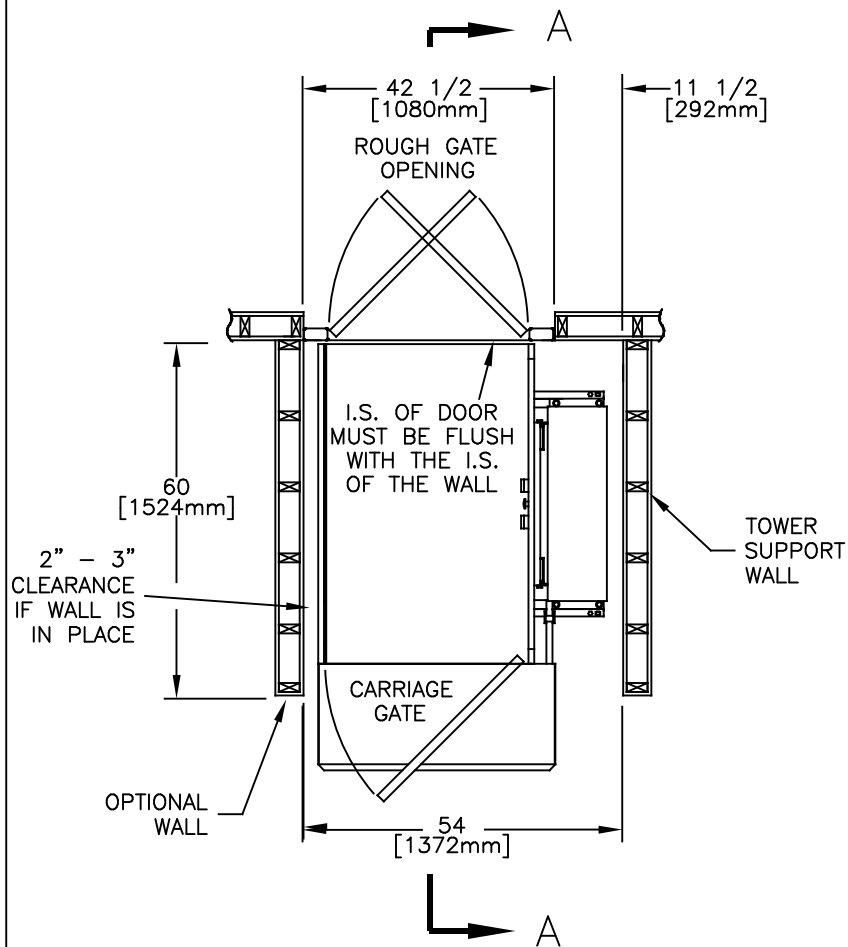
Date: \_\_\_\_\_

Per: \_\_\_\_\_

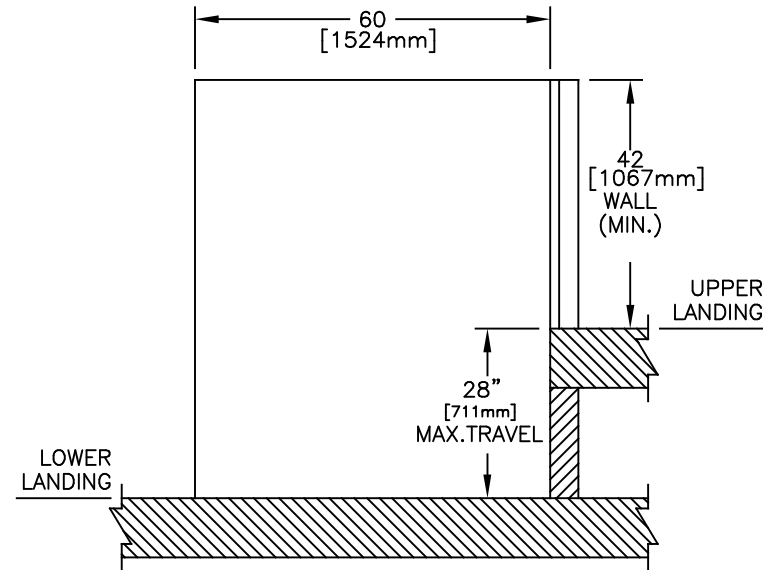
### NOTES:

- Dimensions are in inches


JOB No.	TOTAL TRAVEL 28 711 INCHES mm	No. OF LANDINGS 2	 by Accessibility Professionals		
LOCATION	sample drawings vertical unenclosed lift				
ARCHITECT			DWN. BY: R.A.MEUNIER	INSTALLATION DETAILS AND SPECIFICATIONS	
GENERAL CONTRACTOR			CHECKED BY:		
			SCALE: N.T.S.	DATE: 30/May/14	DRAWING No. 1/2 REV 28UCRDUGNCST-750 A



PLAN VIEW SECTION



SECTION A-A

JOB No.	TOTAL TRAVEL	28 711	INCHES mm	No. OF LANDINGS	2	<div></div>			
LOCATION	sample drawings unenclosed vertical lift					INSTALLATION DETAILS AND SPECIFICATIONS			
ARCHITECT									
GENERAL CONTRACTOR						DWN. BY: R.A.MEUNIER			
						CHECKED BY:			
						SCALE: N.T.S.	DATE: 30/ May/ 14	DRAWING No. 2/2 28UCRDUGNCST-750	REV A