

APEB28STRCOMLAL

SPECIFICATIONS:

- 34" x 54" [864mm x 1372mm] LIFT PLATFORM
- 49" x 54" [1245mm x 1372mm] FOOTPRINT
- 61 1/2" [1562mm] TOWER HEIGHT
- 0" - 28" [0mm - 711mm] LIFT RANGE
- MAXIMUM LOAD 750 lbs. [340 kg.]
- 8 F.P.M [0.04 m/s] LIFT SPEED
- SCREW NUT SYNCHRONOUS BELT DRIVE
- MOTOR: 1/2 H.P. 110V A.C.
- POWER SUPPLY: 110V/1PH/60HZ C/W 15A FUSED DISCON.
- NON-LOAD BEARING BACKUP SAFETY NUT ON LIFT SHAFT
- ZERO-LOAD START IN BOTTOM POSITION
- SOLID PLATFORM & UNDER PLATFORM SAFETY PLATE

*DESIGNED & BUILT TO MEET ASME-A18.1-2014 Safety Code

*DOORS: - UPPER-RAM GATE
- LOWER-CARGATE

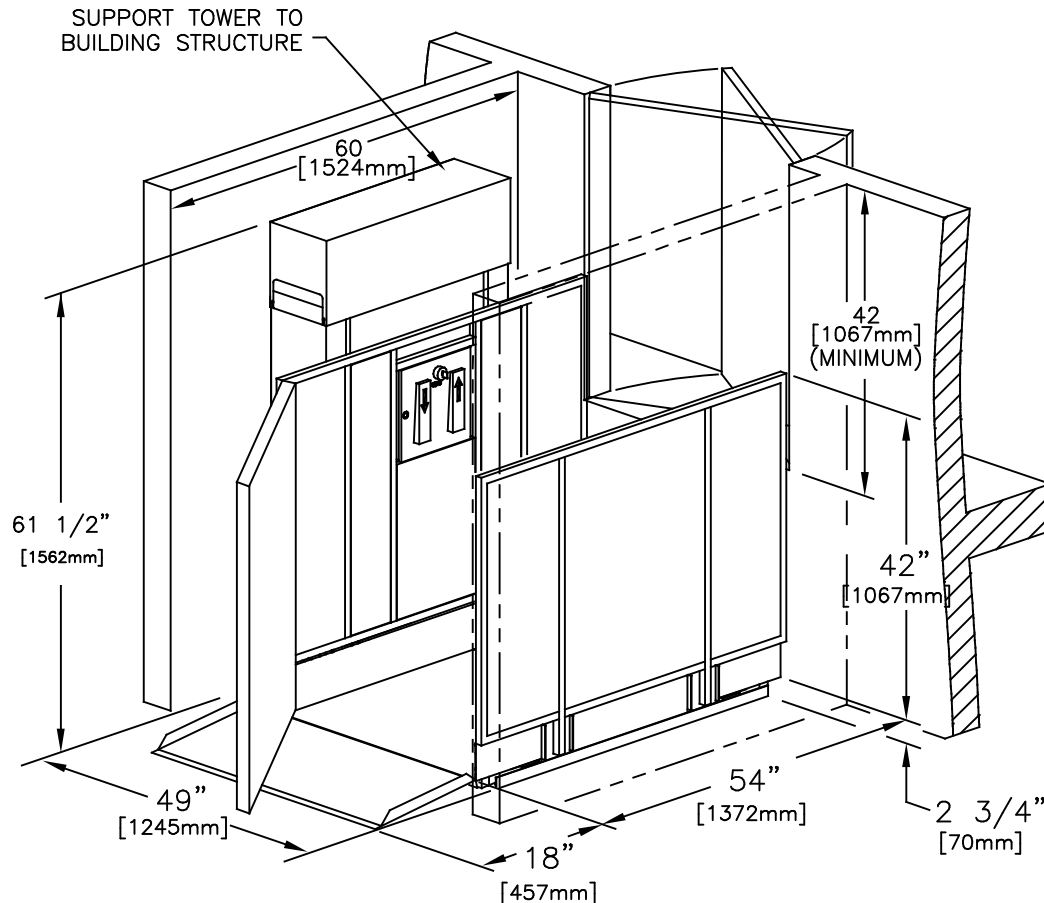
- ☐ Accepted as Shown
☐ Revise and Resubmit
☐ Accepted as Modified

Date: _____


Per: _____

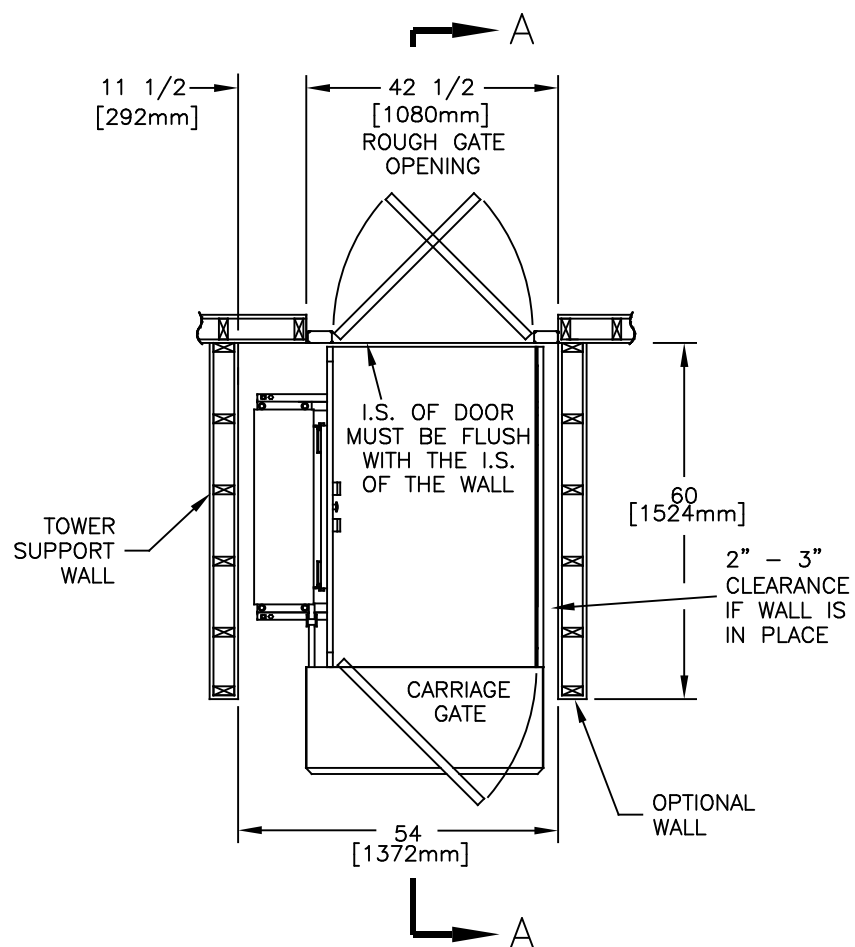
NOTES:

- Dimensions are in inches

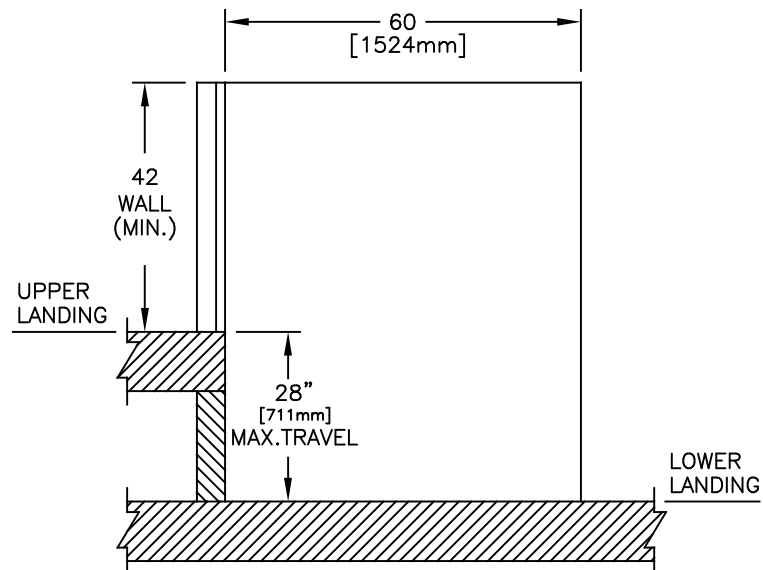


TRUS-T-LIFT DIMENSIONS

JOB No.	TOTAL TRAVEL	28 711	INCHES mm	No. OF LANDINGS	2	<div> <i>by Accessibility Professionals</i></div>				
LOCATION	sample drawings vertical unenclosed lift					DWN. BY: R.A.MEUNIER		INSTALLATION DETAILS AND SPECIFICATIONS		
ARCHITECT						CHECKED BY:				
GENERAL CONTRACTOR						SCALE: N.T.S.		DATE: 30/ May/ 14	DRAWING No. 1/2 28UCLDUGNCST-750	REV A



PLAN VIEW SECTION



SECTION A-A

JOB No.	TOTAL TRAVEL 28 711 INCHES mm	No. OF LANDINGS 2	<div><div><div>FREE</div><div>OM</div></div><div>Lift Systems</div><div>by Accessibility Professionals</div></div>				
LOCATION	sample drawings unenclosed vertical lift						
ARCHITECT			DWN. BY: R.A.MEUNIER		INSTALLATION DETAILS AND SPECIFICATIONS		
			CHECKED BY:				
GENERAL CONTRACTOR			SCALE: N.T.S.		DATE: 30/ May 14	DRAWING No. 2/2 28UCLDUGNCST-750	REV A