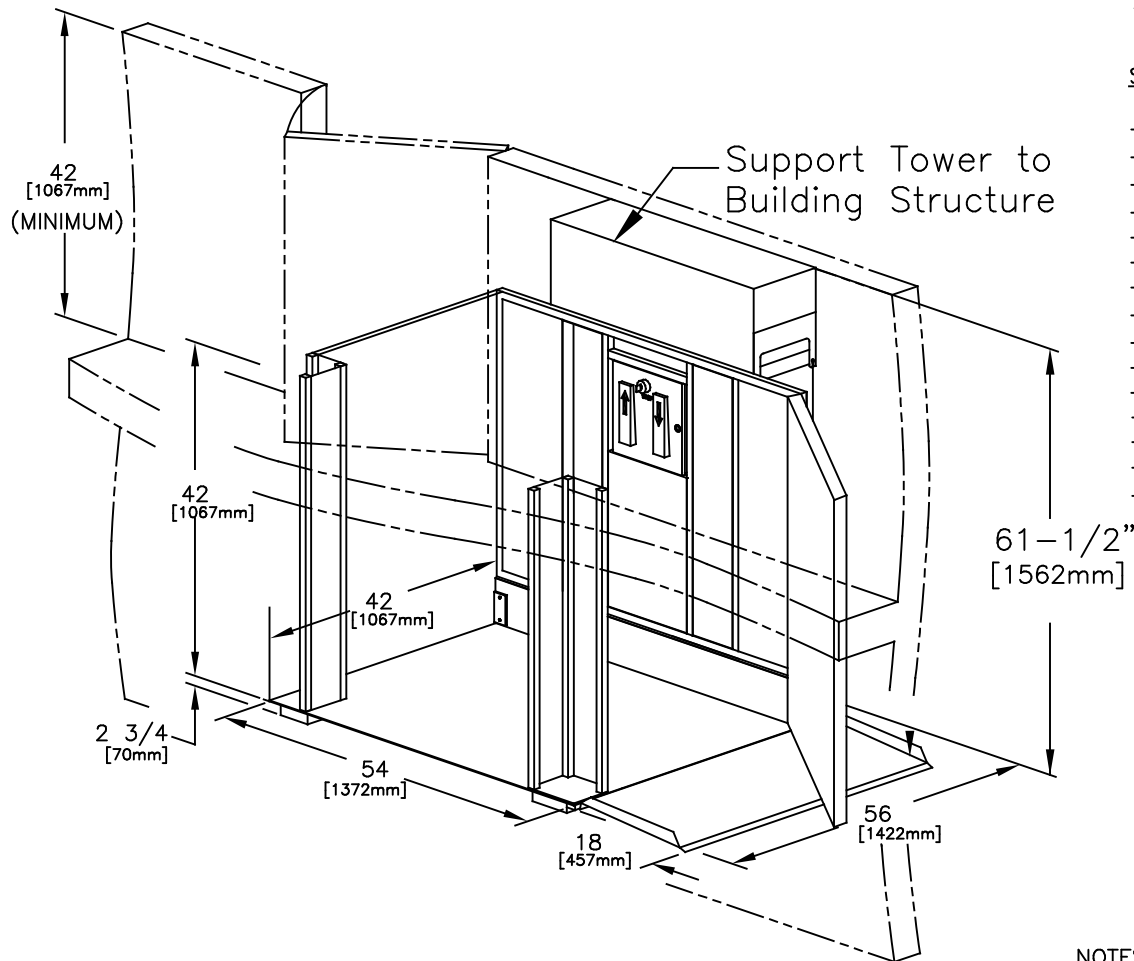


APEB28ADJCOMLAR 42"x54"

SPECIFICATIONS:

- 42" x 54" [1067mm x 1372mm] LIFT PLATFORM
- 56" x 54" [1422mm x 1372mm] FOOTPRINT
- 61 1/2" [1562mm] TOWER HEIGHT
- 0" - 28" [0mm - 711mm] LIFT RANGE
- MAXIMUM LOAD 750 lbs. [340 Kg.]
- 8 F.P.M [0.04 M/S] LIFT SPEED
- SCREW NUT SYNCHRONOUS BELT DRIVE
- MOTOR: 1/2 H.P. 110V A.C.
- POWER SUPPLY: 110V/1PH/60HZ C/W 15A FUSED DISCON.
- NON-LOAD BEARING BACKUP SAFETY NUT ON LIFT SHAFT
- ZERO-LOAD START IN BOTTOM POSITION
- 42" HIGH GATE (SWING) ON UPPER LANDING
- 42" HIGH CARRIAGE GATE (SWING)
- SOLID PLATFORM & UNDER PLATFORM SAFETY PLATE
- AUTO GATES




- ☐ Accepted as Shown
- ☐ Revise and Resubmit
- ☐ Accepted as Modified

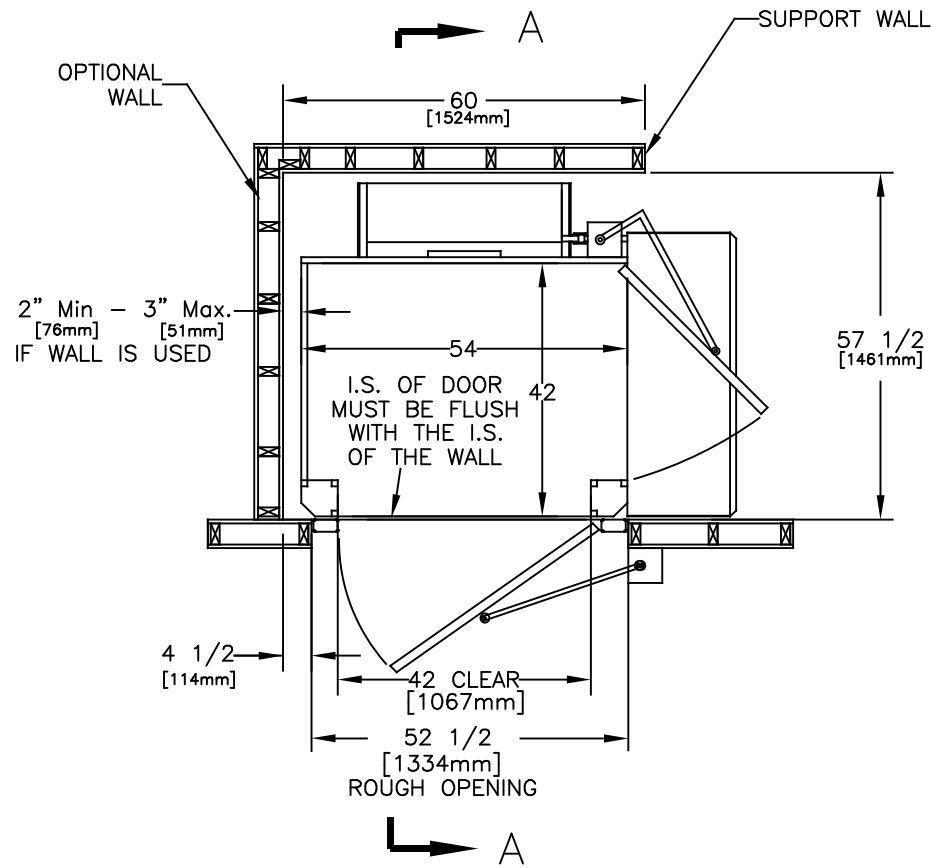
Date: _____

Per: _____

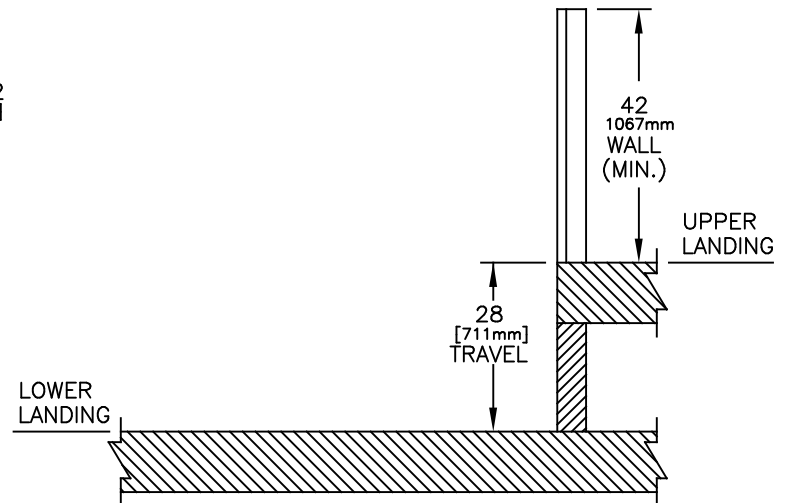
NOTES:

- Dimensions are in inches & [mm]
- Designed to meet ASME A18.1 2014

JOB No.	TOTAL TRAVEL 28 711	INCHES mm	No. OF LANDINGS 2	<div> by Accessibility Professionals</div>				
LOCATION	SIDE ACCESS WITH CARRIAGE GATE SAMPLE DRAWINGS			DWN. BY: VZ		INSTALLATION DETAILS AND SPECIFICATIONS		
ARCHITECT				CHECKED BY:				
GENERAL CONTRACTOR				SCALE: N.T.S.	DATE: 10/ Mar/ 15	DRAWING No. 1/2 28UCRDUGNCAT-750	REV A	



PLAN VIEW SECTION



SECTION A-A

JOB No.	TOTAL TRAVEL 28 711	INCHES mm	No. OF LANDINGS 2	<div>FREEOM Lift Systems</div> <div>by Accessibility Professionals</div>				
LOCATION	SIDE ACCESS WITH CARRIAGE GATE SAMPLE DRAWINGS			DWN. BY: VZ		INSTALLATION DETAILS AND SPECIFICATIONS		
ARCHITECT				CHECKED BY:				
GENERAL CONTRACTOR				SCALE: N.T.S.	DATE: 10/Mar/ 15	DRAWING No. 2/2 28UCRDUGNCAT-750	REV A	